

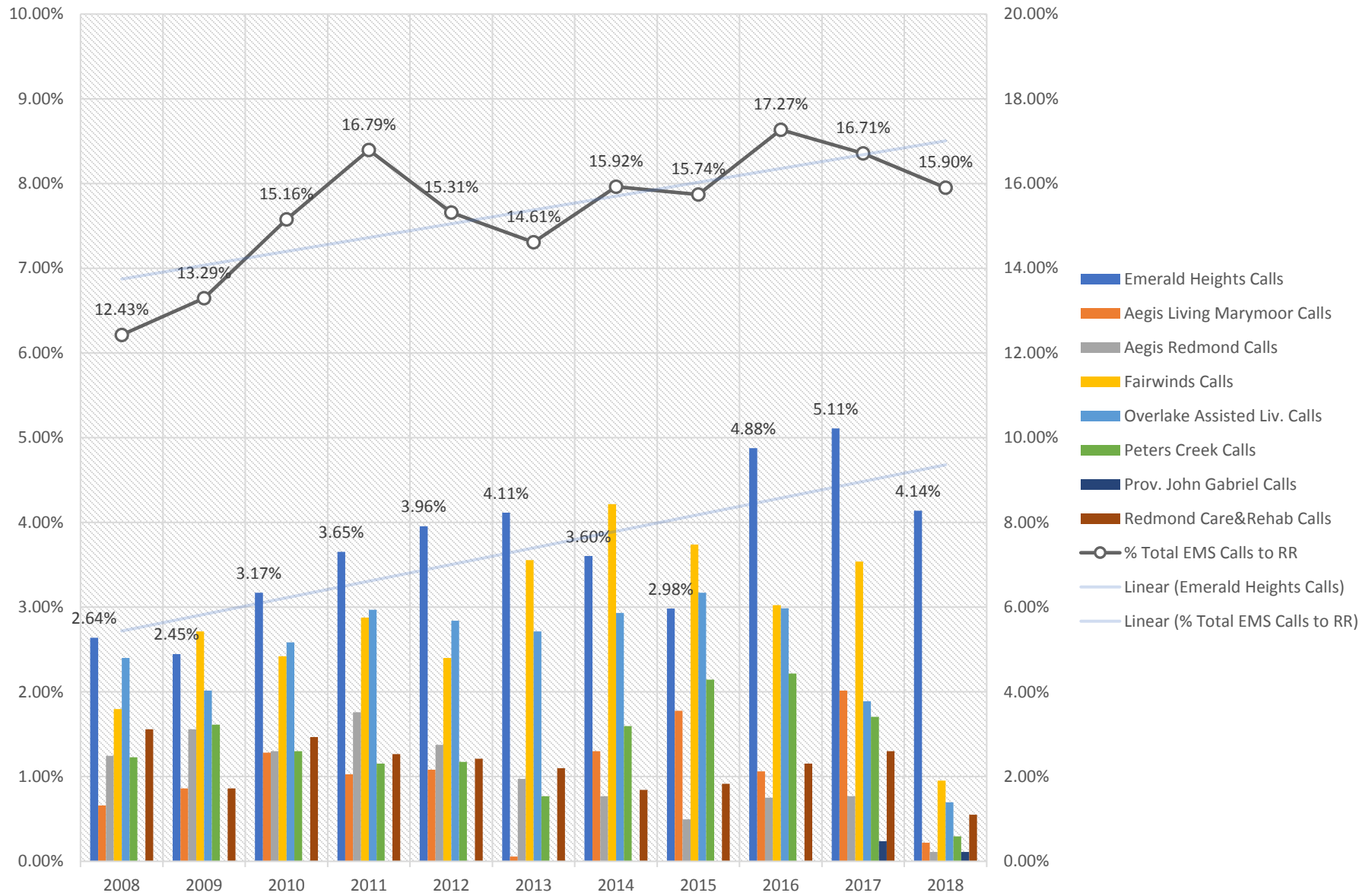
Year	2008	2009	2010	2011	2012	2013	2014	2015	2016	2017	2018	Total
<b>Total City of Remdond Transports</b>	2065	2018	2258	2359	2505	2351	2473	2516	2600	2387	673	<b>24205</b>
<b>Emerald Heights Transports</b>	106	100	122	154	180	172	155	139	205	224	48	<b>1605</b>
<b>Aegis Living Marymoor Transports</b>	17	32	49	32	45	1	45	62	38	67	7	<b>395</b>
<b>Aegis Redmond Transports</b>	44	43	49	72	53	38	29	19	32	26	4	<b>409</b>
<b>Fairwinds Transports</b>	69	90	75	102	101	144	155	151	122	125	33	<b>1167</b>
<b>Overlake Assisted Liv. Transports</b>	80	70	87	105	89	86	107	127	110	61	20	<b>942</b>
<b>Peters Creek Transports</b>	49	60	46	41	49	27	62	69	75	48	10	<b>536</b>
<b>Prov. John Gabriel Transports</b>										2	2	<b>4</b>
<b>Redmond Care&amp;Rehab Transports</b>	59	37	64	48	51	49	34	35	47	50	17	<b>491</b>
<b>Redmond Heights Transports</b>	32	46	44	37	35	51	54	48	77	43	13	<b>480</b>

<b>Total RR</b>	<b>456</b>	<b>478</b>	<b>536</b>	<b>591</b>	<b>603</b>	<b>568</b>	<b>641</b>	<b>650</b>	<b>706</b>	<b>646</b>	<b>154</b>	<b>6029</b>
<b>% of Total</b>	<b>22%</b>	<b>24%</b>	<b>24%</b>	<b>25%</b>	<b>24%</b>	<b>24%</b>	<b>26%</b>	<b>26%</b>	<b>27%</b>	<b>27%</b>	<b>23%</b>	<b>25%</b>

Year	2008	2009	2010	2011	2012	2013	2014	2015	2016	2017	2018	Total
<b>EH Percentage of City Transports</b>	<b>5.1%</b>	<b>5.0%</b>	<b>5.4%</b>	<b>6.5%</b>	<b>7.2%</b>	<b>7.3%</b>	<b>6.3%</b>	<b>5.5%</b>	<b>7.9%</b>	<b>9.4%</b>	<b>7.1%</b>	<b>6.6%</b>
<b>ALM Percentage of City Transports</b>	<b>0.8%</b>	<b>1.6%</b>	<b>2.2%</b>	<b>1.4%</b>	<b>1.8%</b>	<b>0.0%</b>	<b>1.8%</b>	<b>2.5%</b>	<b>1.5%</b>	<b>2.8%</b>	<b>1.0%</b>	<b>1.6%</b>
<b>AR Percentage of City Transports</b>	<b>2.1%</b>	<b>2.1%</b>	<b>2.2%</b>	<b>3.1%</b>	<b>2.1%</b>	<b>1.6%</b>	<b>1.2%</b>	<b>0.8%</b>	<b>1.2%</b>	<b>1.1%</b>	<b>0.6%</b>	<b>1.7%</b>
<b>FW Percentage of City Transports</b>	<b>3.3%</b>	<b>4.5%</b>	<b>3.3%</b>	<b>4.3%</b>	<b>4.0%</b>	<b>6.1%</b>	<b>6.3%</b>	<b>6.0%</b>	<b>4.7%</b>	<b>5.2%</b>	<b>4.9%</b>	<b>4.8%</b>
<b>OAL Percentage of City Transports</b>	<b>3.9%</b>	<b>3.5%</b>	<b>3.9%</b>	<b>4.5%</b>	<b>3.6%</b>	<b>3.7%</b>	<b>4.3%</b>	<b>5.0%</b>	<b>4.2%</b>	<b>2.6%</b>	<b>3.0%</b>	<b>3.9%</b>
<b>PC Percentage of City Transports</b>	<b>2.4%</b>	<b>3.0%</b>	<b>2.0%</b>	<b>1.7%</b>	<b>2.0%</b>	<b>1.1%</b>	<b>2.5%</b>	<b>2.7%</b>	<b>2.9%</b>	<b>2.0%</b>	<b>1.5%</b>	<b>2.2%</b>
<b>PJG Percentage of City Transports</b>										<b>0.1%</b>	<b>0.3%</b>	<b>0.0%</b>
<b>RC&amp;R Percentage of City Transports</b>	<b>2.9%</b>	<b>1.8%</b>	<b>2.8%</b>	<b>2.0%</b>	<b>2.0%</b>	<b>2.1%</b>	<b>1.4%</b>	<b>1.4%</b>	<b>1.8%</b>	<b>2.1%</b>	<b>2.5%</b>	<b>2.0%</b>
<b>RH Percentage of City Transports</b>	<b>1.5%</b>	<b>2.3%</b>	<b>1.9%</b>	<b>1.6%</b>	<b>1.4%</b>	<b>2.2%</b>	<b>2.2%</b>	<b>1.9%</b>	<b>3.0%</b>	<b>1.8%</b>	<b>1.9%</b>	<b>2.0%</b>

# Ten Year History of RFD EMS Calls to Retirement Residences

## Percentage of all EMS calls in Redmond



Year	2008	2009	2010	2011	2012	2013	2014	2015	2016	2017	2018	Total
Total City of Remdond Calls	5456	5598	5364	5038	5309	5372	5715	5763	5866	6027	1547	57055
Emerald Heights Calls	144	137	170	184	210	221	206	172	286	308	64	2102
Aegis Living Marymoor Calls	36	47	70	56	59	3	71	97	58	110	12	619
Aegis Redmond Calls	68	85	71	96	75	53	42	27	41	42	6	606
Fairwinds Calls	98	148	132	157	131	194	230	204	165	193	52	1704
Overlake Assisted Liv. Calls	131	110	141	162	155	148	160	173	163	103	38	1484
Peters Creek Calls	67	88	71	63	64	42	87	117	121	93	16	829
Prov. John Gabriel Calls										13	6	19
Redmond Care&Rehab Calls	85	47	80	69	66	60	46	50	63	71	30	667
Redmond Heights Calls	49	82	78	59	53	64	68	67	116	74	22	732
<b>Total RR</b>	<b>678</b>	<b>744</b>	<b>813</b>	<b>846</b>	<b>813</b>	<b>785</b>	<b>910</b>	<b>907</b>	<b>1013</b>	<b>1007</b>	<b>246</b>	<b>8762</b>
<b>% Total</b>	<b>12%</b>	<b>13%</b>	<b>15%</b>	<b>17%</b>	<b>15%</b>	<b>15%</b>	<b>16%</b>	<b>16%</b>	<b>17%</b>	<b>17%</b>	<b>16%</b>	<b>15%</b>

	2008	2009	2010	2011	2012	2013	2014	2015	2016	2017	2018	Total
Emerald Heights Calls	2.64%	2.45%	3.17%	3.65%	3.96%	4.11%	3.60%	2.98%	4.88%	5.11%	4.14%	40.69%
Aegis Living Marymoor Calls	0.66%	0.86%	1.28%	1.03%	1.08%	0.05%	1.30%	1.78%	1.06%	2.02%	0.22%	11.35%
Aegis Redmond Calls	1.25%	1.56%	1.30%	1.76%	1.37%	0.97%	0.77%	0.49%	0.75%	0.77%	0.11%	11.11%
Fairwinds Calls	1.80%	2.71%	2.42%	2.88%	2.40%	3.56%	4.22%	3.74%	3.02%	3.54%	0.95%	31.23%
Overlake Assisted Liv. Calls	2.40%	2.02%	2.58%	2.97%	2.84%	2.71%	2.93%	3.17%	2.99%	1.89%	0.70%	27.20%
Peters Creek Calls	1.23%	1.61%	1.30%	1.15%	1.17%	0.77%	1.59%	2.14%	2.22%	1.70%	0.29%	15.19%
Prov. John Gabriel Calls	0.00%	0.00%	0.00%	0.00%	0.00%	0.00%	0.00%	0.00%	0.00%	0.24%	0.11%	0.35%
Redmond Care&Rehab Calls	1.56%	0.86%	1.47%	1.26%	1.21%	1.10%	0.84%	0.92%	1.15%	1.30%	0.55%	12.23%
% Total	12.43%	13.29%	15.16%	16.79%	15.31%	14.61%	15.92%	15.74%	17.27%	16.71%	15.90%	15.36%

Year	2008	2009	2010	2011	2012	2013	2014	2015	2016	2017	2018	Total
EH Percentage of City Calls	2.6%	2.4%	3.2%	3.7%	4.0%	4.1%	3.6%	3.0%	4.9%	5.1%	4.1%	3.7%
ALM Percentage of City Calls	0.7%	0.8%	1.3%	1.1%	1.1%	0.1%	1.2%	1.7%	1.0%	1.8%	0.8%	1.1%
AR Percentage of City Calls	1.2%	1.5%	1.3%	1.9%	1.4%	1.0%	0.7%	0.5%	0.7%	0.7%	0.4%	1.1%
FW Percentage of City Calls	1.8%	2.6%	2.5%	3.1%	2.5%	3.6%	4.0%	3.5%	2.8%	3.2%	3.4%	3.0%
OAL Percentage of City Calls	2.4%	2.0%	2.6%	3.2%	2.9%	2.8%	2.8%	3.0%	2.8%	1.7%	2.5%	2.6%
PC Percentage of City Calls	1.2%	1.6%	1.3%	1.3%	1.2%	0.8%	1.5%	2.0%	2.1%	1.5%	1.0%	1.5%
PJG Percentage of City Calls										0.2%	0.4%	0.0%
RC&R Percentage of City Calls	1.6%	0.8%	1.5%	1.4%	1.2%	1.1%	0.8%	0.9%	1.1%	1.2%	1.9%	1.2%
RH Percentage of City Calls	0.9%	1.5%	1.5%	1.2%	1.0%	1.2%	1.2%	1.2%	2.0%	1.2%	1.4%	1.3%

### City of Redmond Calls for Service by Category

Year	2008	2009	2010	2011	2012	2013	2014	2015	2016	2017	2018
EMS	4023	4103	4065	3959	4121	3978	4268	4452	4512	4587	1246
Suppression	1433	1495	1299	1079	1188	1394	1447	1311	1354	1440	301
<b>Total</b>	<b>5456</b>	<b>5598</b>	<b>5364</b>	<b>5038</b>	<b>5309</b>	<b>5372</b>	<b>5715</b>	<b>5763</b>	<b>5866</b>	<b>6027</b>	<b>1547</b>

### Emerald Heights Calls for Service by Category

Year	2008	2009	2010	2011	2012	2013	2014	2015	2016	2017	2018
EMS	134	126	158	180	202	215	195	167	278	298	61
Suppression	10	11	12	4	8	6	11	5	8	10	3
<b>Total</b>	<b>144</b>	<b>137</b>	<b>170</b>	<b>184</b>	<b>210</b>	<b>221</b>	<b>206</b>	<b>172</b>	<b>286</b>	<b>308</b>	<b>64</b>

### Emerald Heights as a Percentage of City of Redmond Calls for Service by Category

Year	2008	2009	2010	2011	2012	2013	2014	2015	2016	2017	2018
EMS	3.3%	3.1%	3.9%	4.5%	4.9%	5.4%	4.6%	3.8%	6.2%	6.5%	4.9%
Suppression	0.7%	0.7%	0.9%	0.4%	0.7%	0.4%	0.8%	0.4%	0.6%	0.7%	1.0%
<b>Total</b>	<b>2.6%</b>	<b>2.4%</b>	<b>3.2%</b>	<b>3.7%</b>	<b>4.0%</b>	<b>4.1%</b>	<b>3.6%</b>	<b>3.0%</b>	<b>4.9%</b>	<b>5.1%</b>	<b>4.1%</b>

### City of Redmond Calls for Service by Category

Year	2008	2009	2010	2011	2012	2013	2014	2015	2016	2017	2018
EMS	4023	4103	4065	3959	4121	3978	4268	4452	4512	4587	1246
Suppression	1433	1495	1299	1079	1188	1394	1447	1311	1354	1440	301
<b>Total</b>	<b>5456</b>	<b>5598</b>	<b>5364</b>	<b>5038</b>	<b>5309</b>	<b>5372</b>	<b>5715</b>	<b>5763</b>	<b>5866</b>	<b>6027</b>	<b>1547</b>

### Aegis Living Marymoor Calls for Service by Category

Year	2008	2009	2010	2011	2012	2013	2014	2015	2016	2017	2018
EMS	34	42	67	53	58	1	67	91	54	105	11
Suppression	2	5	3	3	1	2	4	6	4	5	1
<b>Total</b>	<b>36</b>	<b>47</b>	<b>70</b>	<b>56</b>	<b>59</b>	<b>3</b>	<b>71</b>	<b>97</b>	<b>58</b>	<b>110</b>	<b>12</b>

### Aegis Living Marymoor as a Percentage of City of Redmond Calls for Service by Category

Year	2008	2009	2010	2011	2012	2013	2014	2015	2016	2017	2018
EMS	0.8%	1.0%	1.6%	1.3%	1.4%	0.0%	1.6%	2.0%	1.2%	2.3%	0.9%
Suppression	0.1%	0.3%	0.2%	0.3%	0.1%	0.1%	0.3%	0.5%	0.3%	0.3%	0.3%
<b>Total</b>	<b>0.7%</b>	<b>0.8%</b>	<b>1.3%</b>	<b>1.1%</b>	<b>1.1%</b>	<b>0.1%</b>	<b>1.2%</b>	<b>1.7%</b>	<b>1.0%</b>	<b>1.8%</b>	<b>0.8%</b>

### City of Redmond Calls for Service by Category

Year	2008	2009	2010	2011	2012	2013	2014	2015	2016	2017	2018
EMS	4023	4103	4065	3959	4121	3978	4268	4452	4512	4587	1246
Suppression	1433	1495	1299	1079	1188	1394	1447	1311	1354	1440	301
<b>Total</b>	<b>5456</b>	<b>5598</b>	<b>5364</b>	<b>5038</b>	<b>5309</b>	<b>5372</b>	<b>5715</b>	<b>5763</b>	<b>5866</b>	<b>6027</b>	<b>1547</b>

### Aegis Redmond Calls for Service by Category

Year	2008	2009	2010	2011	2012	2013	2014	2015	2016	2017	2018
EMS	67	81	70	92	72	49	42	26	41	38	6
Suppression	1	4	1	4	3	4		1		4	
<b>Total</b>	<b>68</b>	<b>85</b>	<b>71</b>	<b>96</b>	<b>75</b>	<b>53</b>	<b>42</b>	<b>27</b>	<b>41</b>	<b>42</b>	<b>6</b>

### Aegis Redmond as a Percentage of City of Redmond Calls for Service by Category

Year	2008	2009	2010	2011	2012	2013	2014	2015	2016	2017	2018
EMS	1.7%	2.0%	1.7%	2.3%	1.7%	1.2%	1.0%	0.6%	0.9%	0.8%	0.5%
Suppression	0.1%	0.3%	0.1%	0.4%	0.3%	0.3%	0.0%	0.1%	0.0%	0.3%	0.0%
<b>Total</b>	<b>1.2%</b>	<b>1.5%</b>	<b>1.3%</b>	<b>1.9%</b>	<b>1.4%</b>	<b>1.0%</b>	<b>0.7%</b>	<b>0.5%</b>	<b>0.7%</b>	<b>0.7%</b>	<b>0.4%</b>

### City of Redmond Calls for Service by Category

Year	2008	2009	2010	2011	2012	2013	2014	2015	2016	2017	2018
EMS	4023	4103	4065	3959	4121	3978	4268	4452	4512	4587	1246
Suppression	1433	1495	1299	1079	1188	1394	1447	1311	1354	1440	301
<b>Total</b>	<b>5456</b>	<b>5598</b>	<b>5364</b>	<b>5038</b>	<b>5309</b>	<b>5372</b>	<b>5715</b>	<b>5763</b>	<b>5866</b>	<b>6027</b>	<b>1547</b>

### Fairwinds Calls for Service by Category

Year	2008	2009	2010	2011	2012	2013	2014	2015	2016	2017	2018
EMS	93	141	125	152	127	189	226	201	161	187	52
Suppression	5	7	7	5	4	5	4	3	4	6	
<b>Total</b>	<b>98</b>	<b>148</b>	<b>132</b>	<b>157</b>	<b>131</b>	<b>194</b>	<b>230</b>	<b>204</b>	<b>165</b>	<b>193</b>	<b>52</b>

### Fairwinds as a Percentage of City of Redmond Calls for Service by Category

Year	2008	2009	2010	2011	2012	2013	2014	2015	2016	2017	2018
EMS	2.3%	3.4%	3.1%	3.8%	3.1%	4.8%	5.3%	4.5%	3.6%	4.1%	4.2%
Suppression	0.3%	0.5%	0.5%	0.5%	0.3%	0.4%	0.3%	0.2%	0.3%	0.4%	0.0%
<b>Total</b>	<b>1.8%</b>	<b>2.6%</b>	<b>2.5%</b>	<b>3.1%</b>	<b>2.5%</b>	<b>3.6%</b>	<b>4.0%</b>	<b>3.5%</b>	<b>2.8%</b>	<b>3.2%</b>	<b>3.4%</b>

### City of Redmond Calls for Service by Category

Year	2008	2009	2010	2011	2012	2013	2014	2015	2016	2017	2018
EMS	4023	4103	4065	3959	4121	3978	4268	4452	4512	4587	1246
Suppression	1433	1495	1299	1079	1188	1394	1447	1311	1354	1440	301
<b>Total</b>	<b>5456</b>	<b>5598</b>	<b>5364</b>	<b>5038</b>	<b>5309</b>	<b>5372</b>	<b>5715</b>	<b>5763</b>	<b>5866</b>	<b>6027</b>	<b>1547</b>

### Overlake Assisted Living Calls for Service by Category

Year	2008	2009	2010	2011	2012	2013	2014	2015	2016	2017	2018
EMS	123	102	132	160	151	144	150	168	156	96	32
Suppression	8	8	9	2	4	4	10	5	7	7	6
<b>Total</b>	<b>131</b>	<b>110</b>	<b>141</b>	<b>162</b>	<b>155</b>	<b>148</b>	<b>160</b>	<b>173</b>	<b>163</b>	<b>103</b>	<b>38</b>

### Overlake Assisted Living as a Percentage of City of Redmond Calls for Service by Category

Year	2008	2009	2010	2011	2012	2013	2014	2015	2016	2017	2018
EMS	3.1%	2.5%	3.2%	4.0%	3.7%	3.6%	3.5%	3.8%	3.5%	2.1%	2.6%
Suppression	0.6%	0.5%	0.7%	0.2%	0.3%	0.3%	0.7%	0.4%	0.5%	0.5%	2.0%
<b>Total</b>	<b>2.4%</b>	<b>2.0%</b>	<b>2.6%</b>	<b>3.2%</b>	<b>2.9%</b>	<b>2.8%</b>	<b>2.8%</b>	<b>3.0%</b>	<b>2.8%</b>	<b>1.7%</b>	<b>2.5%</b>



### City of Redmond Calls for Service by Category

Year	2008	2009	2010	2011	2012	2013	2014	2015	2016	2017	2018
EMS	4023	4103	4065	3959	4121	3978	4268	4452	4512	4587	1246
Suppression	1433	1495	1299	1079	1188	1394	1447	1311	1354	1440	301
<b>Total</b>	<b>5456</b>	<b>5598</b>	<b>5364</b>	<b>5038</b>	<b>5309</b>	<b>5372</b>	<b>5715</b>	<b>5763</b>	<b>5866</b>	<b>6027</b>	<b>1547</b>

### Peters Creek Calls for Service by Category

Year	2008	2009	2010	2011	2012	2013	2014	2015	2016	2017	2018
EMS	66	88	70	61	63	42	83	114	120	93	15
Suppression	1		1	2	1		4	3	1		1
<b>Total</b>	<b>67</b>	<b>88</b>	<b>71</b>	<b>63</b>	<b>64</b>	<b>42</b>	<b>87</b>	<b>117</b>	<b>121</b>	<b>93</b>	<b>16</b>

### Peters Creek as a Percentage of City of Redmond Calls for Service by Category

Year	2008	2009	2010	2011	2012	2013	2014	2015	2016	2017	2018
EMS	1.6%	2.1%	1.7%	1.5%	1.5%	1.1%	1.9%	2.6%	2.7%	2.0%	1.2%
Suppression	0.1%	0.0%	0.1%	0.2%	0.1%	0.0%	0.3%	0.2%	0.1%	0.0%	0.3%
<b>Total</b>	<b>1.2%</b>	<b>1.6%</b>	<b>1.3%</b>	<b>1.3%</b>	<b>1.2%</b>	<b>0.8%</b>	<b>1.5%</b>	<b>2.0%</b>	<b>2.1%</b>	<b>1.5%</b>	<b>1.0%</b>

**City of Redmond Calls for Service by Category**

Year	2008	2009	2010	2011	2012	2013	2014	2015	2016	2017	2018
EMS	4023	4103	4065	3959	4121	3978	4268	4452	4512	4587	1246
Suppression	1433	1495	1299	1079	1188	1394	1447	1311	1354	1440	301
<b>Total</b>	<b>5456</b>	<b>5598</b>	<b>5364</b>	<b>5038</b>	<b>5309</b>	<b>5372</b>	<b>5715</b>	<b>5763</b>	<b>5866</b>	<b>6027</b>	<b>1547</b>

**Providence John Gabriel Creek Calls for Service by Category**

Year	2008	2009	2010	2011	2012	2013	2014	2015	2016	2017	2018
EMS										11	4
Suppression										2	2
<b>Total</b>										<b>13</b>	<b>6</b>

**Providence John Gabriel as a Percentage of City of Redmond Calls for Service by Category**

Year	2008	2009	2010	2011	2012	2013	2014	2015	2016	2017	2018
EMS	-	-	-	-	-	-	-	-	-	0.2%	0.3%
Suppression	-	-	-	-	-	-	-	-	-	0.1%	0.7%
<b>Total</b>	<b>-</b>	<b>-</b>	<b>-</b>	<b>-</b>	<b>-</b>	<b>-</b>	<b>-</b>	<b>-</b>	<b>-</b>	<b>0.2%</b>	<b>0.4%</b>

### City of Redmond Calls for Service by Category

Year	2008	2009	2010	2011	2012	2013	2014	2015	2016	2017	2018
EMS	4023	4103	4065	3959	4121	3978	4268	4452	4512	4587	1246
Suppression	1433	1495	1299	1079	1188	1394	1447	1311	1354	1440	301
<b>Total</b>	<b>5456</b>	<b>5598</b>	<b>5364</b>	<b>5038</b>	<b>5309</b>	<b>5372</b>	<b>5715</b>	<b>5763</b>	<b>5866</b>	<b>6027</b>	<b>1547</b>

### Redmond Care & Rehab for Service by Category

Year	2008	2009	2010	2011	2012	2013	2014	2015	2016	2017	2018
EMS	83	46	79	68	66	60	44	49	61	70	30
Suppression	2	1	1	1			2	1	2	1	
<b>Total</b>	<b>85</b>	<b>47</b>	<b>80</b>	<b>69</b>	<b>66</b>	<b>60</b>	<b>46</b>	<b>50</b>	<b>63</b>	<b>71</b>	<b>30</b>

### Redmond Care & Rehab as a Percentage of City of Redmond Calls for Service by Category

Year	2008	2009	2010	2011	2012	2013	2014	2015	2016	2017	2018
EMS	2.1%	1.1%	1.9%	1.7%	1.6%	1.5%	1.0%	1.1%	1.4%	1.5%	2.4%
Suppression	0.1%	0.1%	0.1%	0.1%	0.0%	0.0%	0.1%	0.1%	0.1%	0.1%	0.0%
<b>Total</b>	<b>1.6%</b>	<b>0.8%</b>	<b>1.5%</b>	<b>1.4%</b>	<b>1.2%</b>	<b>1.1%</b>	<b>0.8%</b>	<b>0.9%</b>	<b>1.1%</b>	<b>1.2%</b>	<b>1.9%</b>

### City of Redmond Calls for Service by Category

Year	2008	2009	2010	2011	2012	2013	2014	2015	2016	2017	2018
EMS	4023	4103	4065	3959	4121	3978	4268	4452	4512	4587	1246
Suppression	1433	1495	1299	1079	1188	1394	1447	1311	1354	1440	301
<b>Total</b>	<b>5456</b>	<b>5598</b>	<b>5364</b>	<b>5038</b>	<b>5309</b>	<b>5372</b>	<b>5715</b>	<b>5763</b>	<b>5866</b>	<b>6027</b>	<b>1547</b>

### Redmond Heights for Service by Category

Year	2008	2009	2010	2011	2012	2013	2014	2015	2016	2017	2018
EMS	47	76	74	52	52	62	64	66	114	69	21
Suppression	2	6	4	7	1	2	4	1	2	5	1
<b>Total</b>	<b>49</b>	<b>82</b>	<b>78</b>	<b>59</b>	<b>53</b>	<b>64</b>	<b>68</b>	<b>67</b>	<b>116</b>	<b>74</b>	<b>22</b>

### Redmond Heights as a Percentage of City of Redmond Calls for Service by Category

Year	2008	2009	2010	2011	2012	2013	2014	2015	2016	2017	2018
EMS	1.2%	1.9%	1.8%	1.3%	1.3%	1.6%	1.5%	1.5%	2.5%	1.5%	1.7%
Suppression	0.1%	0.4%	0.3%	0.6%	0.1%	0.1%	0.3%	0.1%	0.1%	0.3%	0.3%
<b>Total</b>	<b>0.9%</b>	<b>1.5%</b>	<b>1.5%</b>	<b>1.2%</b>	<b>1.0%</b>	<b>1.2%</b>	<b>1.2%</b>	<b>1.2%</b>	<b>2.0%</b>	<b>1.2%</b>	<b>1.4%</b>