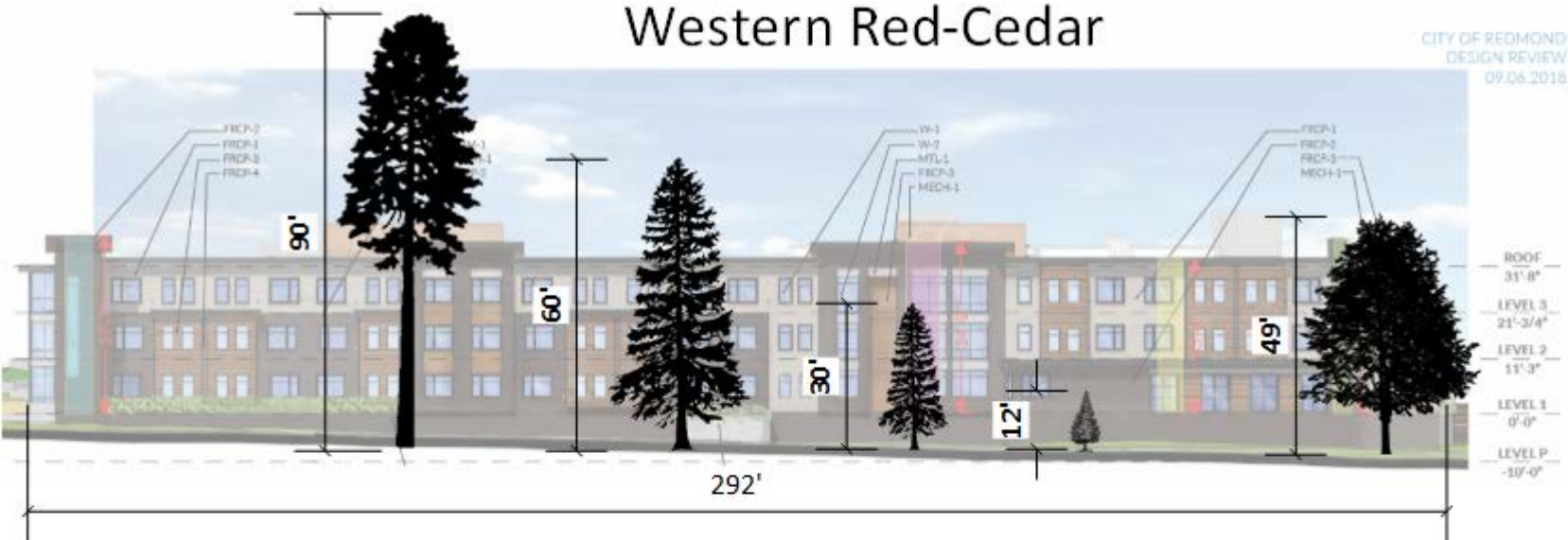


49'-0"

5'-10"

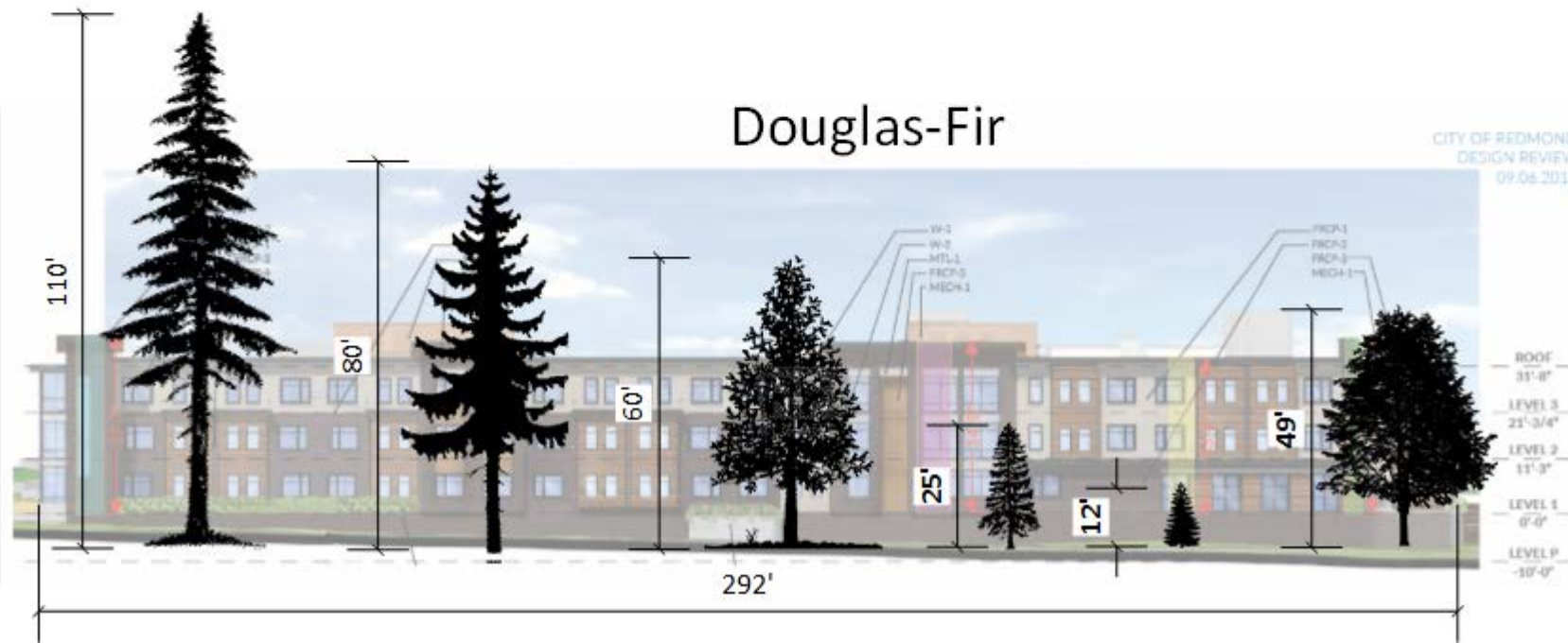
# Western Red-Cedar

CITY OF REDMOND  
DESIGN REVIEW  
09.06.2018



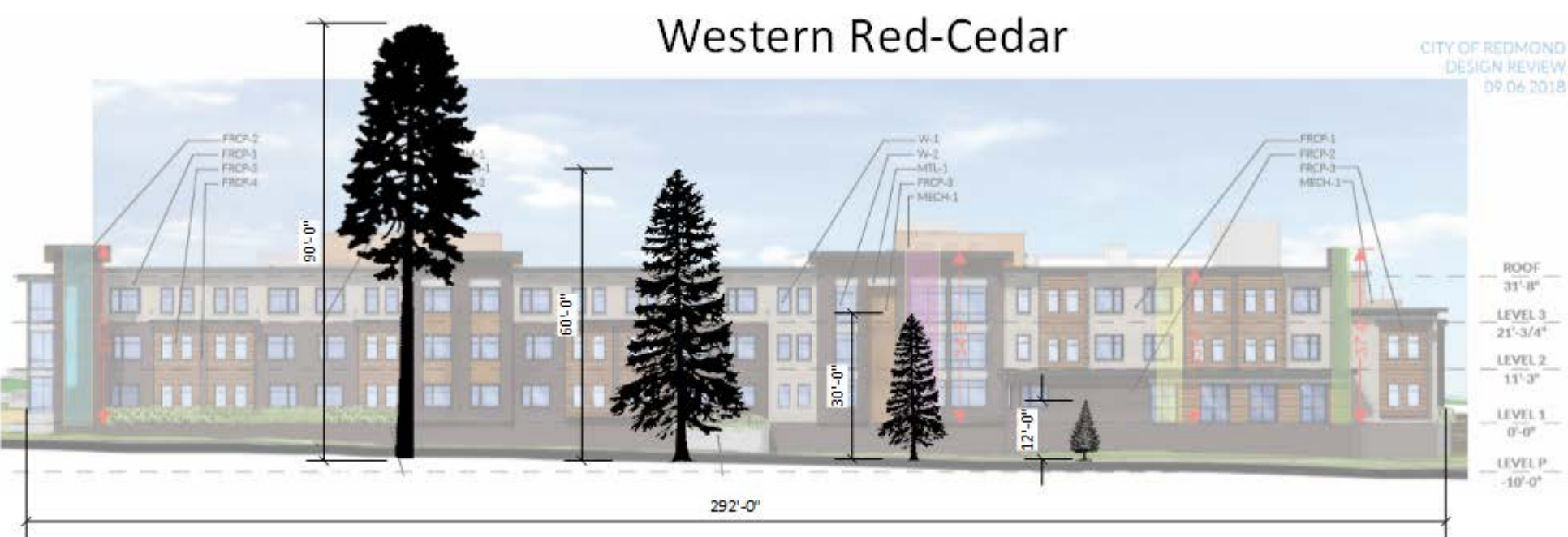
# Douglas-Fir

CITY OF REDMOND  
DESIGN REVIEW  
09.06.2018



# Western Red-Cedar

CITY OF REDMOND  
DESIGN REVIEW  
09.06.2018



# Douglas-Fir

CITY OF REDMOND  
DESIGN REVIEW  
09.06.2018

