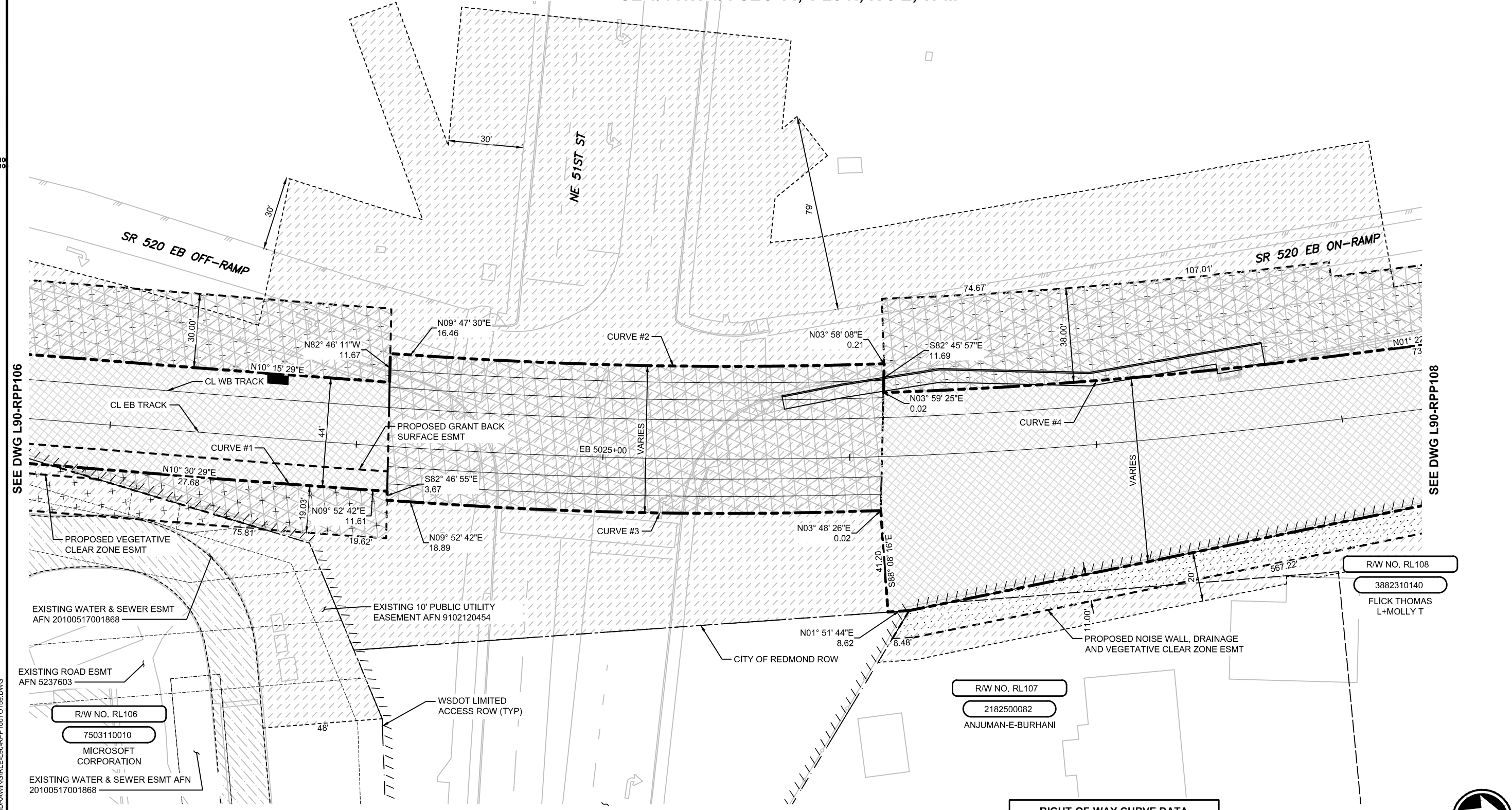


Xrefs:
 RLE-08-TB22x34
 RLE-standards
 RLE-L90-RPP100
 RLE-ROW-Survey
 RLE-SURVEY-N
 RLE-L90-SEP100
 RLE-MergedSF
 RLE-L90-CRP100
 RLE-L90-SWP100
 RLE-L90-CIP100
 RLE-L90-CWP100
 RLE-L90-UCP100
 RLE-SLMS
 RLE-SURVEY-S
 RLE-L90-RHP100
 RLE-E31-APP200
 RLE-E29-ASP100
 RLE-E31-ASP100
 RLE-L90-JEP100
 RLE-E31-LPP100
 RLE-E29-LPP100
 RLE-P29-APP205
 RLE-L90-RPP100
 RLE360-RLE-E27-LPP100
 RLE360-RLE-L88-RPP100

EXHIBIT 15



SEE DWG L90-RPP106

SEE DWG L90-RPP108

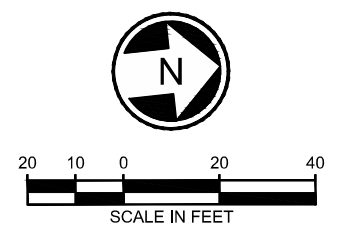
SEE DWG L90-RPP140

% = TEMPORARY CONSTRUCTION EASEMENT x = TEMPORARY ACCESS EASEMENT @ = TEMPORARY CONSTRUCTION AND ACCESS EASEMENT

SOUND TRANSIT R/W NO.	PARCEL NO. (TAX ACCOUNT NO.)	OWNERS	PARCEL AREA SQ. FT.	FEE TAKE SQ. FT.	REMAINDER SQ. FT.	GUIDEWAY/ PERMANENT ESMT SQ. FT.	TEMPORARY CONSTRUCTION ESMT SQ. FT.	KING CO. RECORDING NO.
1	RL106	7503110010	SEE DWG L90 - RPP 106					
2	RL107	2182500082	ANJUMAN-E-BURHANI	30,808			%1,976	
3	RL108	3882310140	SEE DWG L90 - RPP 108					

NO.	Δ	R	T	L
1	000°37'47"	5000.00'	27.48'	54.96'
2	005°49'22"	1805.00'	91.80'	183.44'
3	006°04'16"	1710.00'	90.68'	181.19'
4	005°21'51"	1945.00'	91.11'	182.10'

PRELIMINARY ENGINEERING
 NOT FOR CONSTRUCTION



03/29/18 11:45 AM | CRAWFORDM C:\USERS\CRAWFORDM\DOCUMENTS\RLE\SHAREPOINT LINKS\DRAWING\RLE-L90-RPP100\0159.DWG

<h1>RFP SUBMITTAL</h1> <h2>INTERMEDIATE</h2>		DESIGNED BY: NAGLE/CASSEDAY			SUBMITTED BY: _____ DATE: _____ REVIEWED BY: _____ DATE: _____	SCALE: 1" = 20' FILENAME: RLE-L90-RPP100T0159 CONTRACT No.: _____	DRAWING No.: L90-RPP107 LOCATION ID: _____ SHEET No.: _____ REV: _____ #####
		DRAWN BY: CRAWFORD/MCCABE					
		CHECKED BY: THOMAS/STUMPF					
		APPROVED BY:					
No.	DATE	DSN	CHK	APP	REVISION		