

Belcaro Subdivision

MARCH 2, 2022

NEIGHBORHOOD MEETING

LAND-2021-00943

Agenda

Welcome & Introduction

General Site Information

Project Details

Subdivision Permit Outline (Type III)

Type III Decision Process/ Next Steps

Questions & Answers

General Site Information

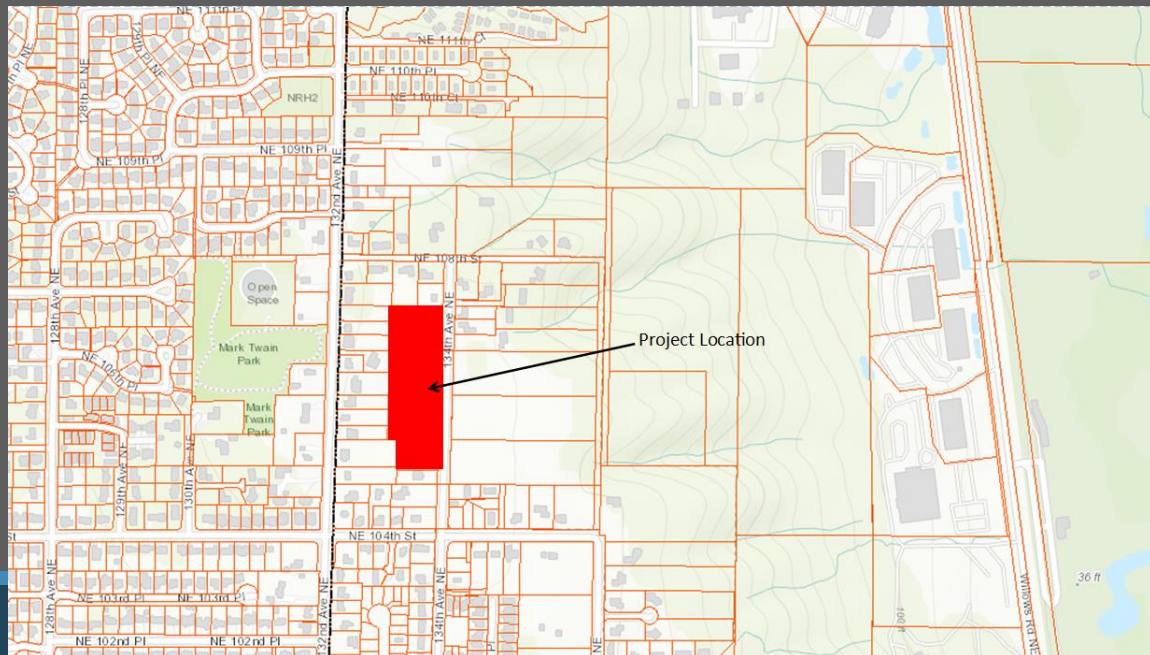
NEIGHBORHOOD: Willows/Rose Hill

ZONE DISTRICT: Residential Innovative (RIN)

AREA SIZE: 4.4 acres

CURRENT: Four single-family homes

Vicinity Map



LEGEND

- PROJECT BOUNDARY
- EXISTING TREE TO BE RETAINED
- EXISTING TREE TO BE REMOVED

Project Details: Site Plan Area

- Demolish 4 existing single-family homes
- Subdivide 5 existing lots into 24 lots
- Construction of 24 new single-family homes, and associated improvements.



Project Details: Tree Retention

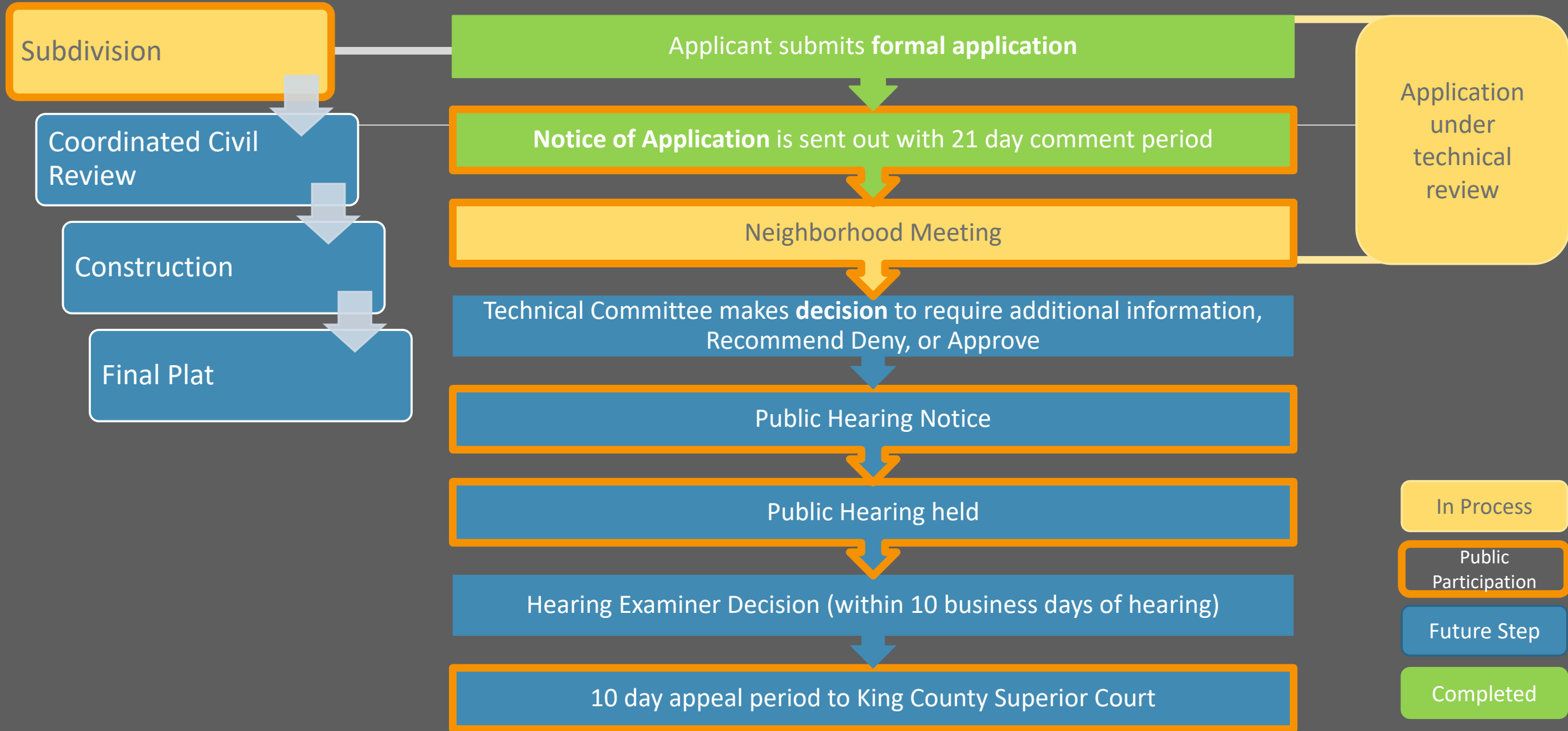
TREE TYPE	REMOVAL	IMPACTED	RETAINED	TOTAL
LANDMARK (OVER 30" DBH)	0 0%	0 0%	0 0%	0 0%
SIGNIFICANT (6" - 30" DBH)	20 63%	0 0%	12 37%	32 100%
TOTALS	20 63%	0 0%	12 37%	32 100%
TREE REPLACEMENT REQUIRED (SIGNIFICANT - 1:1 LANDMARK - 3:1)				20



Subdivision Permit Outline: Type III



Type III Process Flow Chart



Questions

City Contact Information

Andrea Kares, Planner

425.556.2480

akares@redmond.gov

City of Redmond Website

www.redmond.gov

Applicant Contact Information

Paula Judson, Rick Burnstead
Construction LLC

425. 818.7442

paula@burnstead.com