
KING COUNTY COUNTYWIDE PLANNING POLICIES & GROWTH TARGETS

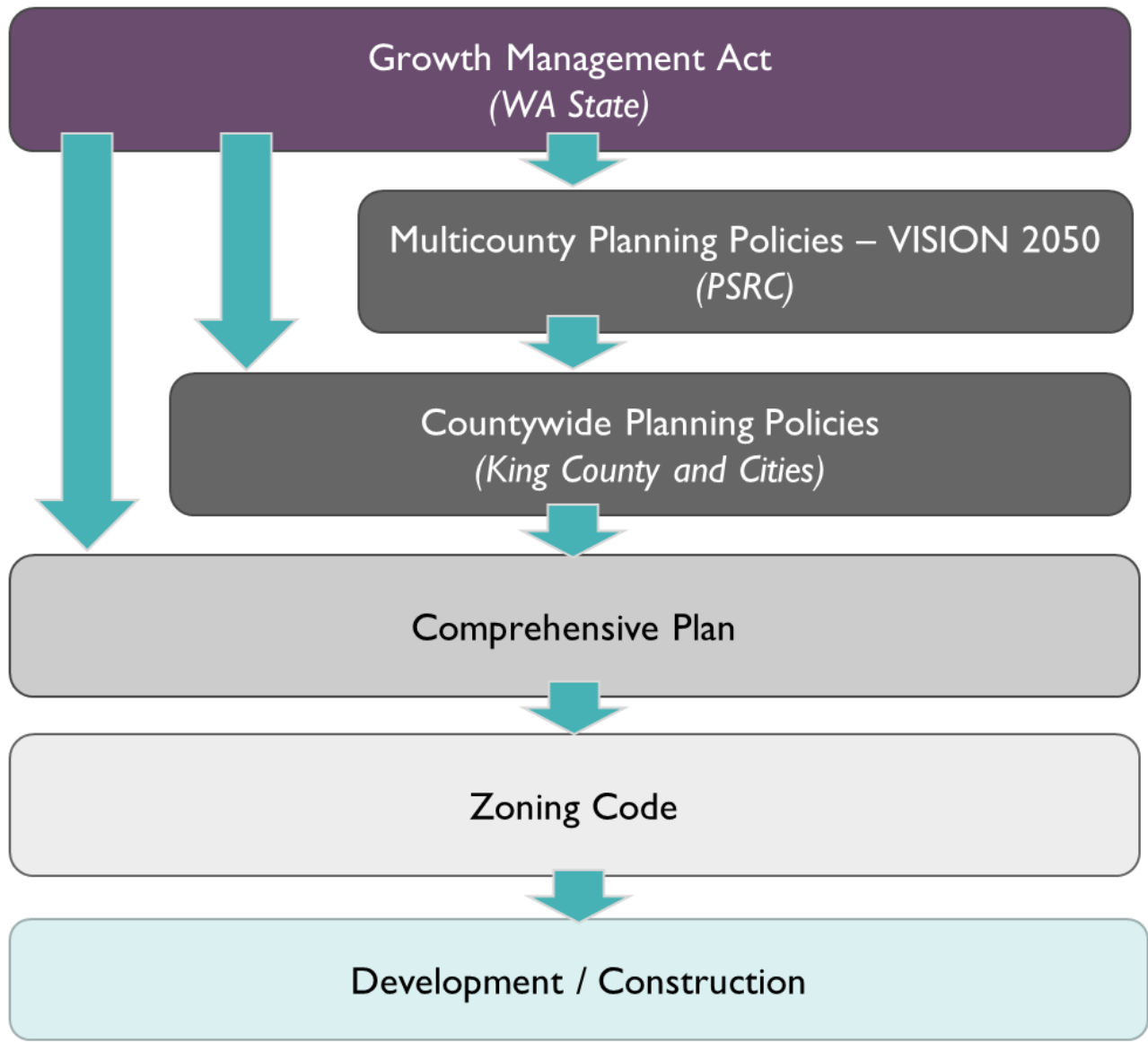
*PRESENTATION FOR CITY OF REDMOND
APRIL 6, 2020*





TONIGHT'S AGENDA

- GMA + GMPC Overview
- Countywide Planning Policies Update
- Growth Targets
- Schedule



IMPLEMENTING THE GROWTH MANAGEMENT ACT

GROWTH MANAGEMENT PLANNING COUNCIL (GMPC)

- Established in 1992 via Interlocal Agreement
- Convened by the King County Executive
- Members representing: King County, City of Seattle, Sound Cities Associations
- Ex-Officio members representing: Special Purpose Districts, School Districts, Port of Seattle
- Oversee the Countywide Planning Policies including: the UGA, Growth Targets, policies for topics of a countywide nature that cross jurisdictional lines
- Make recommendations to the King County Council
- Ratification: after approval and ratification by the King County Council, approval of amendments within 90 days by county & cities representing at least 70% of the population and 30% of those jurisdictions

Countywide Planning Policies establish:

Guidance for the comprehensive plans

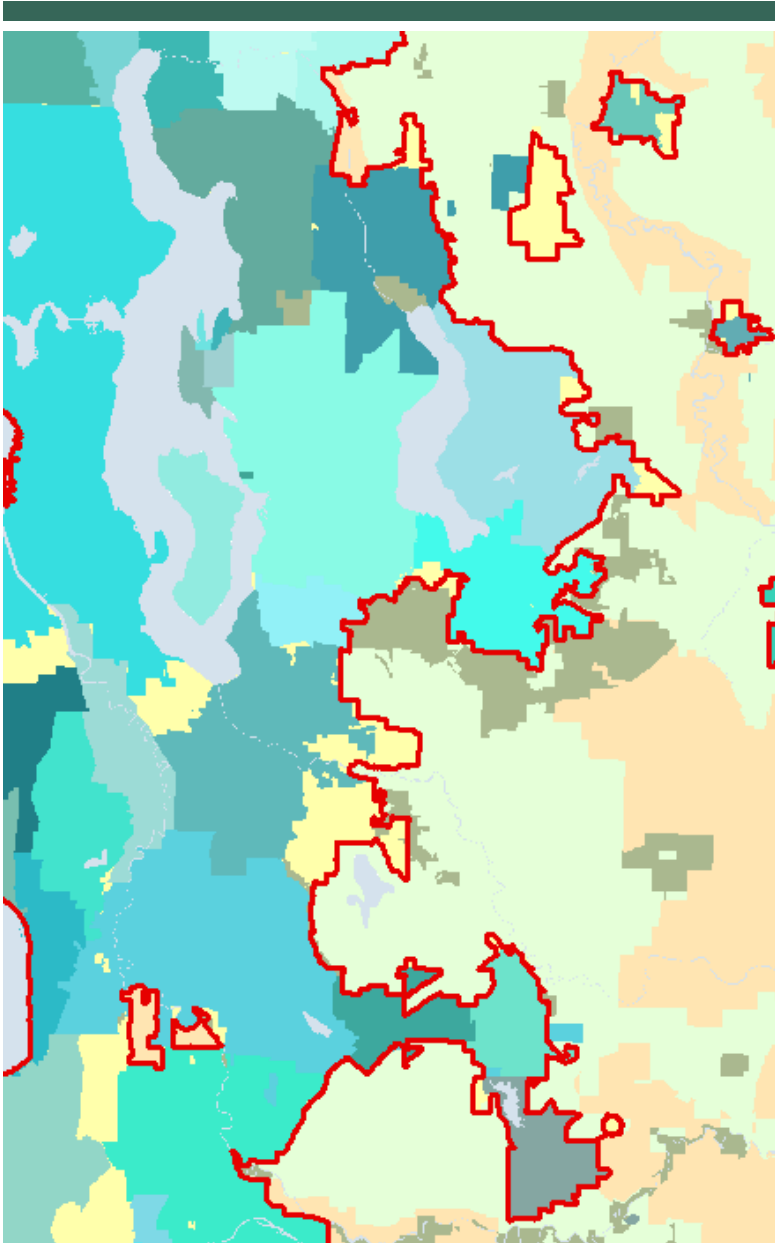
Urban growth area boundary

Criteria for revising growth boundary

Growth targets for each jurisdiction

Criteria for defining urban centers and manufacturing/industrial centers

Policies for issues of a countywide nature



WHY UPDATE COUNTYWIDE PLANNING POLICIES NOW?

-
- VISION 2050 update + Regional Centers Framework
 - New growth targets for 2024 Comprehensive Plans
 - Policy guidance for 2024 Comprehensive Plans
 - Other policy and legislative changes since 2012
 - Policy recommendations from GMPC's Affordable Housing Committee

2021 COUNTYWIDE PLANNING POLICIES GUIDING PRINCIPLES

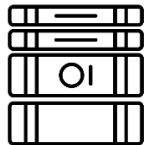


Establish a focused scope for review based on the 2012 baseline



Center social equity

Integrate regional policy & legislative changes



- VISION 2050
- GMA amendments – e.g. for buildable lands
- ST3 and other regional transit investments
- Address unresolved King County Comp. Plan countywide issues
- Policy recommendations from the GMPC's Affordable Housing Committee



Provide clear, actionable direction for comprehensive plans



Implement Regional Growth Strategy with 2044 growth targets that provide the land use assumption for periodic comprehensive plan updates

ENVIRONMENT KEY THEMES



- Emphasize climate change by adding a new subsection.
- Update the greenhouse gas reduction goals to correspond to the goals set by the King County-Cities Climate Collaboration (K4C).
- Protect and restore natural resources that sequester and store carbon.
- Address fossil fuel facilities to protect public health, safety, and welfare; and to protect the natural ecosystem to reduce climate change.
- Address environmental justice issues across several policies including access to a healthy environment, community resilience, and reduction of pollution.
- Provide parks, trails, and open space within walking distance of urban residents prioritizing underserved communities.
- Call for the use of best available science when establishing and implementing environmental standards.

ECONOMY KEY THEMES



- Support the Regional Economic Strategy.
- Support advanced manufacturing throughout the county.
- Foster a supportive environment for locally owned and women and minority owned businesses.
- Reduce historic and ongoing disparities in income and employment opportunities for communities that have been economically disadvantaged.
- Call for the development of a system that provides a safety net during economic downturns.
- Prioritize a diversity of middle-wage jobs.
- Encourage the public and private sectors to incorporate environmental stewardship and social responsibility into their practices.

DEVELOPMENT PATTERNS KEY THEMES



- Integrate social equity and public health into local and countywide planning.
- Codify growth target and urban growth capacity report processes.
- Address four-to-one program provisions.
- Establish a Centers Designation Framework consistent with the PSRC regional framework
- Ensure better understanding of past housing and land use practices that have led to inequities by race and ethnicity.
- Develop new growth targets with a planning horizon to 2044, and link growth targets to land use assumptions in comprehensive plans.
- Strengthen city-county collaboration around annexation area planning. Clarify the process for reassigning potential annexation areas.
- Recognize the role of Cities in the Rural Area consistent with the King County Comprehensive Plan.

HOUSING KEY THEMES



- Align with existing plans including VISION 2050 and the Regional Affordable Housing Task Force Final Report and Recommendations.
- Redefine Countywide Need as the number of homes needed today and, in the future, to ensure that no low-income household is cost burdened.
- Guide cities and the county through a four-step continuous improvement process to meet the countywide need
- Establish regular monitoring of regional and jurisdictional progress through the Affordable Housing Dashboard and leverage new centralized data infrastructure created by King County staff that support the AHC.

HOUSING KEY THEMES, CONT'D.



- The CPP policy amendments are structured to achieve health and equity outcomes with five key equity objectives:
 - Equitable processes and outcomes;
 - Increased housing supply, particularly for households with the greatest needs;
 - Expanded housing options and increased affordability accessible to transit and employment;
 - Expanded housing and neighborhood choice for all residents; and
 - Housing stability, healthy homes, and healthy communities.

TRANSPORTATION KEY THEMES



- Emphasize creating an equitable transportation system.
- Improve the safety of the system for all users.
- Encourage alternatives to driving along including transit and active transportation.
- Minimize displacement and impact on affected communities.
- Strengthen connections between land use and transportation.
- Promote a sustainable system by encouraging transit use, active transportation and alternative fuels.

PUBLIC FACILITIES + SERVICES KEY THEMES



- Address impacts of climate change on fisheries and water reuse and reclamation.
- Make investments in renewable and alternative energy sources.
- Make the provision of telecommunication infrastructure a focus on broadband service to businesses and households of all income levels.
- Commit specific RCW acknowledgement and requirements for district-jurisdiction review meetings with reports to the GMPC to school siting policy.
- Establish a process for public capital facilities of regional or statewide importance to incorporate equity in determining impacts and benefits.
- Prioritize investments for affordable and equitable access to public services in this chapter.
- Consider climate change, economic and health impacts when siting and building essential public facilities.
- Establish a new Public Facility and Service Disaster Preparedness topic area

NEXT STEPS

- Initial draft policy matrix shared with GMPC at February 24th meeting for review and comment
- Interjurisdictional Team Staff will revise draft policies based on comments received
- Next version of draft policies to be presented at March 31st GMPC meeting for public release
- Public comment in April/May

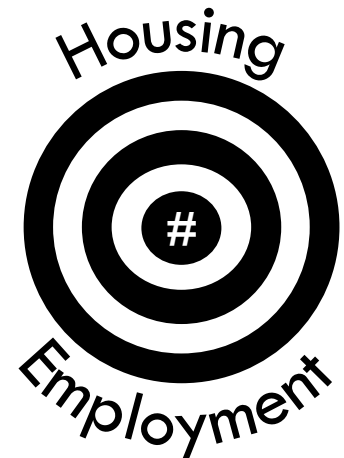


2044 GROWTH TARGETS

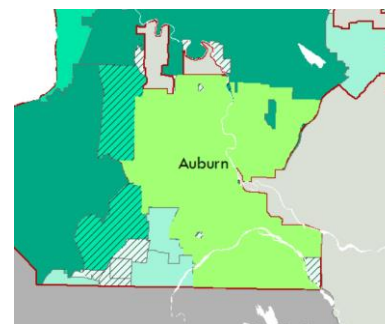
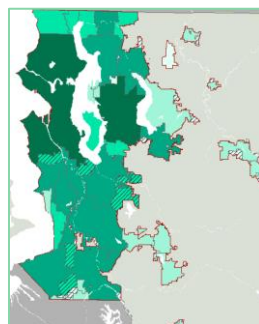
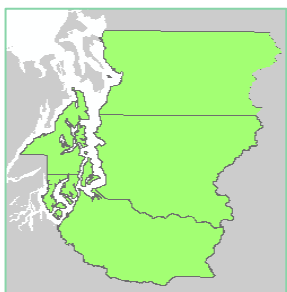
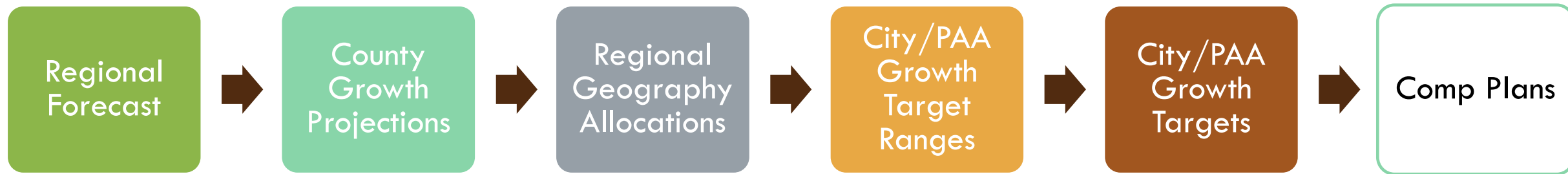
- Growth Targets Development Process
- Countywide and Regional Geography allocations
- Next Steps

WHAT ARE GROWTH TARGETS?

- Growth targets are:
 - A policy statement about the amount of housing and jobs each jurisdiction will plan for in 2024 comprehensive plans
 - Part of the Countywide Planning Policies
 - For the urban area only
 - For at least a 20-year period
 - Created collaboratively by all cities and King County



GROWTH TARGET PROCESS



Data Sources

VISION 2050 Regional Growth Strategy

County/Local Factors

OFM

Pop → HU

COUNTYWIDE AND REGIONAL GEOGRAPHY ALLOCATIONS

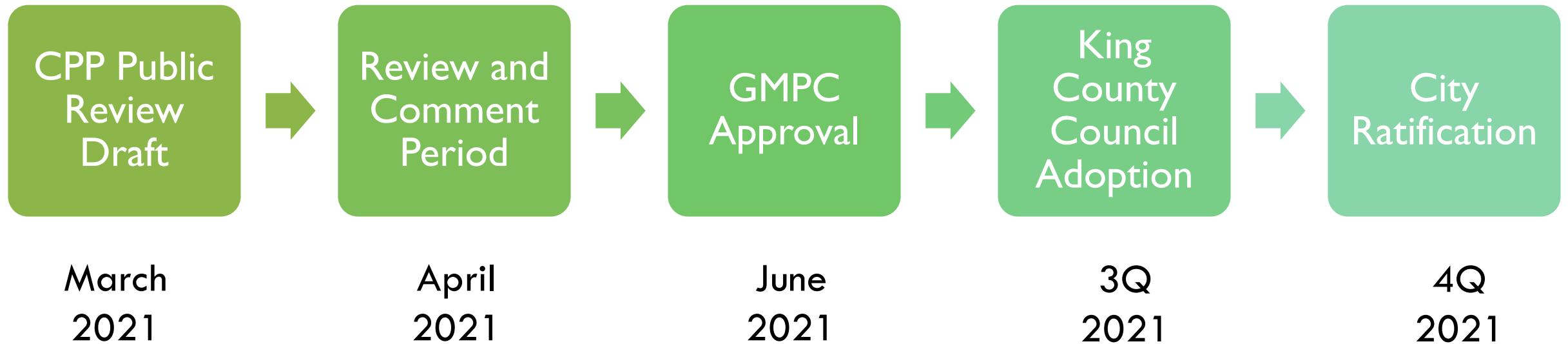
King County 2019-2044

Population	660,850
Housing Units	296,800
Jobs	490,850

2019-2044 Growth	Metro	Core	HCT	Cities and Towns	Urban Unincorporated
<i>Population</i>	288,400	261,900	69,650	33,300	3,000
Housing Units	134,500	112,850	29,950	14,000	1,300
Jobs	223,500	222,800	28,750	12,950	700

*Regional Growth Strategy Rural area growth: 4,200 Housing Units, 2,150 Jobs

COUNTYWIDE PLANNING POLICIES MILESTONES AND ADOPTION





FOR MORE INFORMATION

GMPC WEBSITE

THE KING COUNTY INTERJURISDICTIONAL TEAM

FACILITATOR: KAREN WOLF, FAICP: KAREN.WOLF@KINGCOUNTY.GOV

GROWTH TARGETS LEAD: REBECCA H MASKIN, AICP: RMASKIN@KINGCOUNTY.GOV