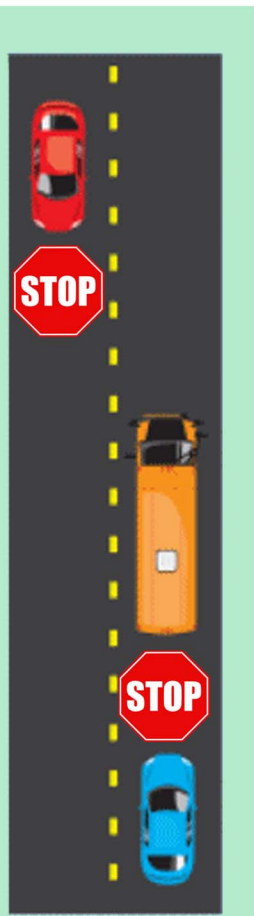
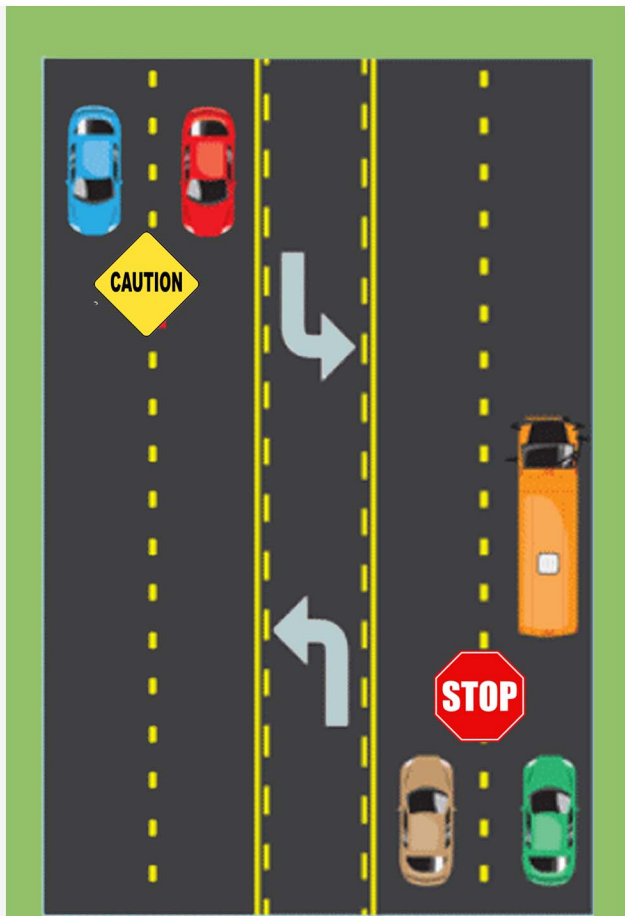


# WHEN A SCHOOL BUS HAS FLASHING LIGHTS AND A STOP PADDLE OR BAR OUT....



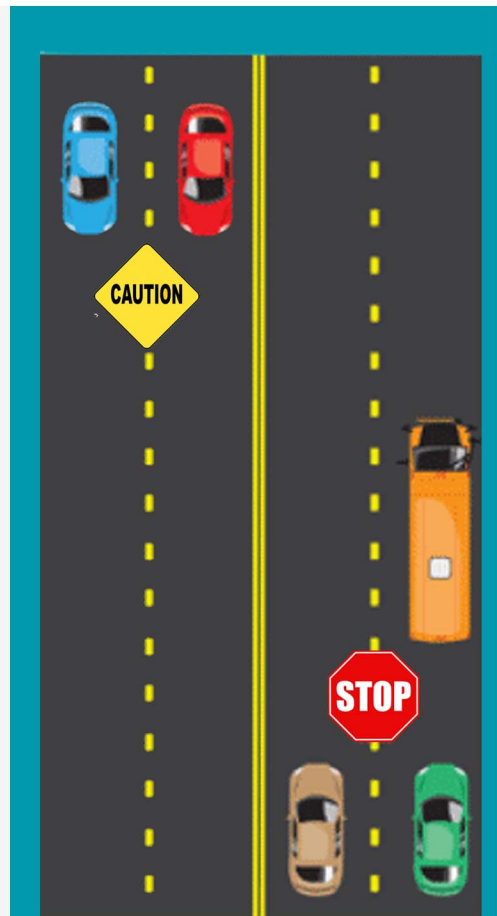
## 2-LANE ROADWAY

.....  
Both directions stop



## MIDDLE TURNING LANE

.....  
Stop if traveling in same direction as bus



## 3 OR MORE LANES

.....  
Stop if traveling in same direction as bus



## MEDIAN OR BARRICADE

.....  
Stop if traveling in same direction as bus

