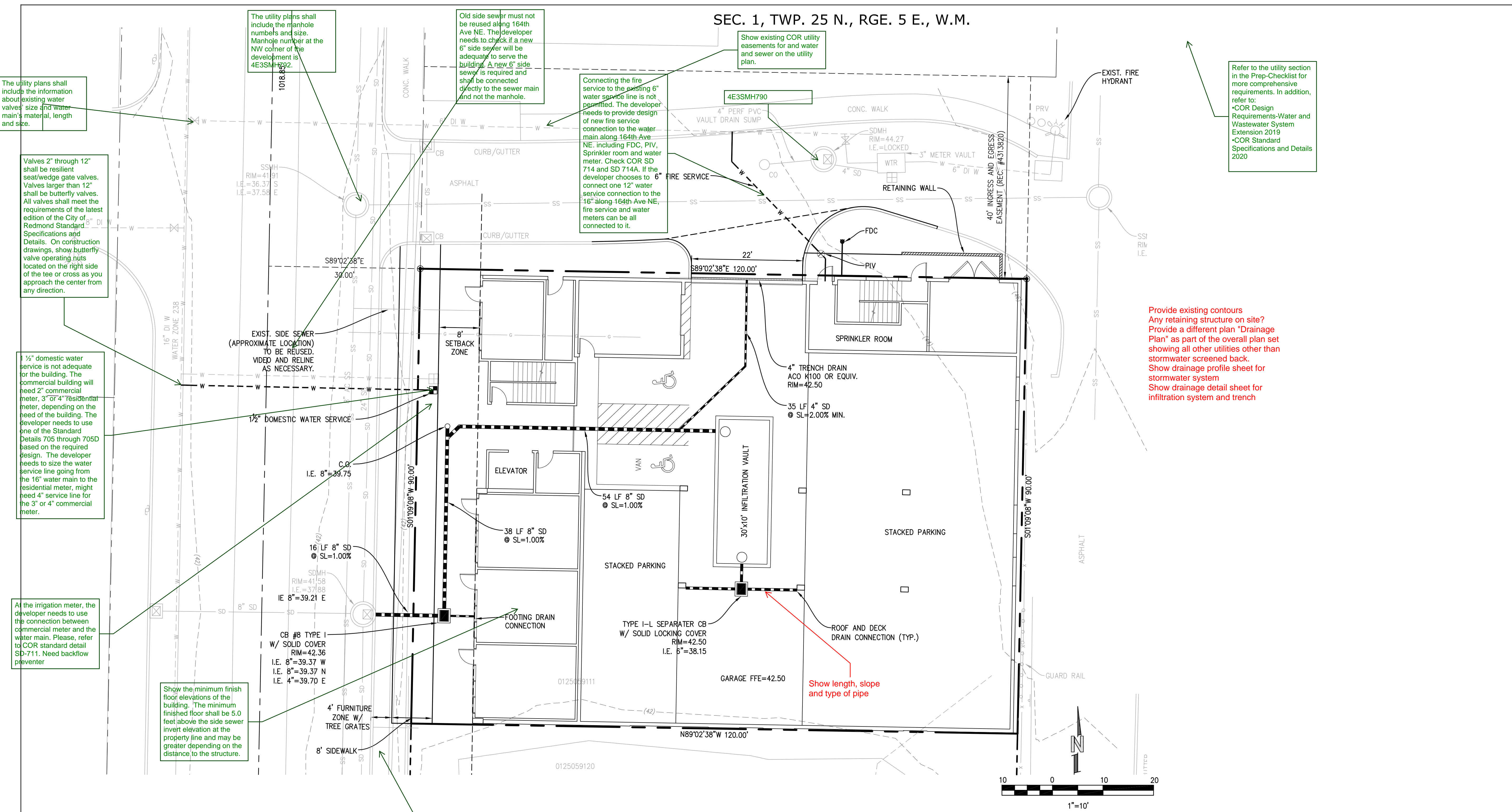


SEC. 1, TWP. 25 N., RGE. 5 E., W.M.



The utility plans shall include the information about existing water valves' size and water main's material, length and size.

The utility plans shall include the manhole numbers and size. Manhole number at the NW corner of the development is 4E3SMH792.

Old side sewer must not be reused along 164th Ave NE. The developer needs to check if a new 6\"/>

Show existing COR utility easements for and water and sewer on the utility plan.

Connecting the fire service to the existing 6\"/>

Refer to the utility section in the Prep-Checklist for more comprehensive requirements. In addition, refer to:
 •COR Design Requirements-Water and Wastewater System Extension 2019
 •COR Standard Specifications and Details 2020

Valves 2\"/>

1/2\"/>

All the irrigation meter, the developer needs to use the connection between commercial meter and the water main. Please, refer to COR standard detail SD-711. Need backflow preventer

Show the minimum finish floor elevations of the building. The minimum finished floor shall be 5.0 feet above the side sewer invert elevation at the property line and may be greater depending on the distance to the structure.

Provide existing contours
 Any retaining structure on site?
 Provide a different plan "Drainage Plan" as part of the overall plan set showing all other utilities other than stormwater screened back.
 Show drainage profile sheet for stormwater system
 Show drainage detail sheet for infiltration system and trench

PROPOSED FEATURES

- STORM DRAIN PIPE
- W — WATER LINE
- S — SEWER LINE
- SEWER MANHOLE
- EASEMENT
- 478 — 2' CONTOURS
- RETAINING WALL
- X — FENCE

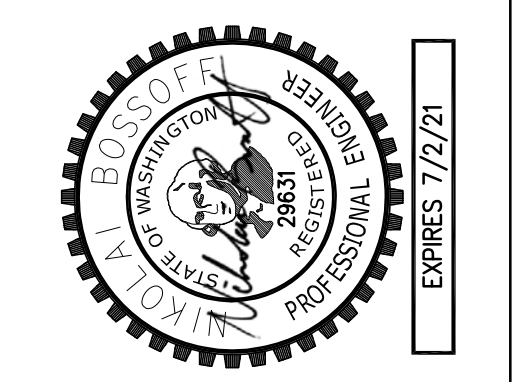
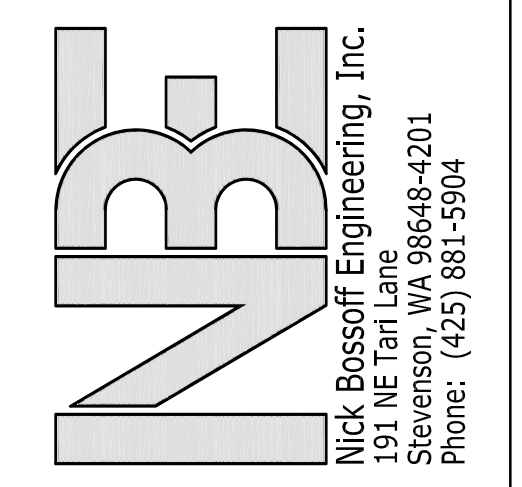
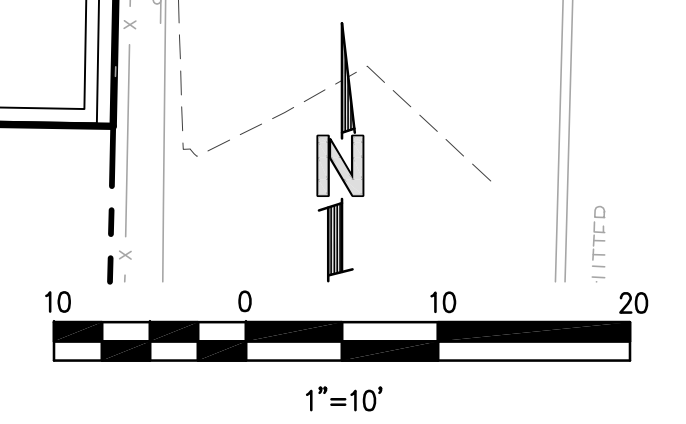
EXISTING FEATURES

- SS — SEWER LINE
- SD — STORM DRAIN PIPE
- W — WATER LINE
- OHP — OVERHEAD POWER
- SEWER MANHOLE
- CATCH BASIN, TYPE II

- CB INSERT
- CATCH BASIN, TYPE I
- CATCH BASIN, TYPE II
- SEWER CLEANOUT
- WATER METER
- AC PAVEMENT
- WATER METER
- FIRE HYDRANT
- WATER VALVE
- UTILITY POLE
- STREET SIGN
- CATCH BASIN, TYPE I

Proposed trees shall be within 8 feet of new or existing water and sewer mains.

See comments on IL01 Existing Illumination page for streetlight conduit and pull box requirements



NO.	DATE	REVISION
1	03/09/20	30% SFE SUBMITTAL
2		
3		
4		
5		

N. BOSSOFF, P.E.
 PROJECT MANAGER:
 N.B.
 DESIGNED:
 TKB
 DRAWN:
 PANT-1901
 JOB NUMBER:
 PANT-1901pin.dwg
 FILE NAME:

HARMONY
8550 164TH AVE NE
 WASHINGTON
 REDMOND

THIS DEVELOPMENT SHALL BE CONSTRUCTED IN ACCORDANCE WITH THE CITY OF REDMOND 2019 STANDARD SPECIFICATIONS AND DETAILS

APPROVED FOR CONSTRUCTION
 FOR: DAVE JUAREZ, DIRECTOR OF PUBLIC WORKS, CITY OF REDMOND
 DATE: _____
 PLAN CHK ENGR: _____
 STORM: _____
 UTILITY: _____
 FIRE: _____
 TRANS/ENGR: _____
 PLANNING: _____

TITLE: **UTILITY PLAN**
 SHEET: **C-1**