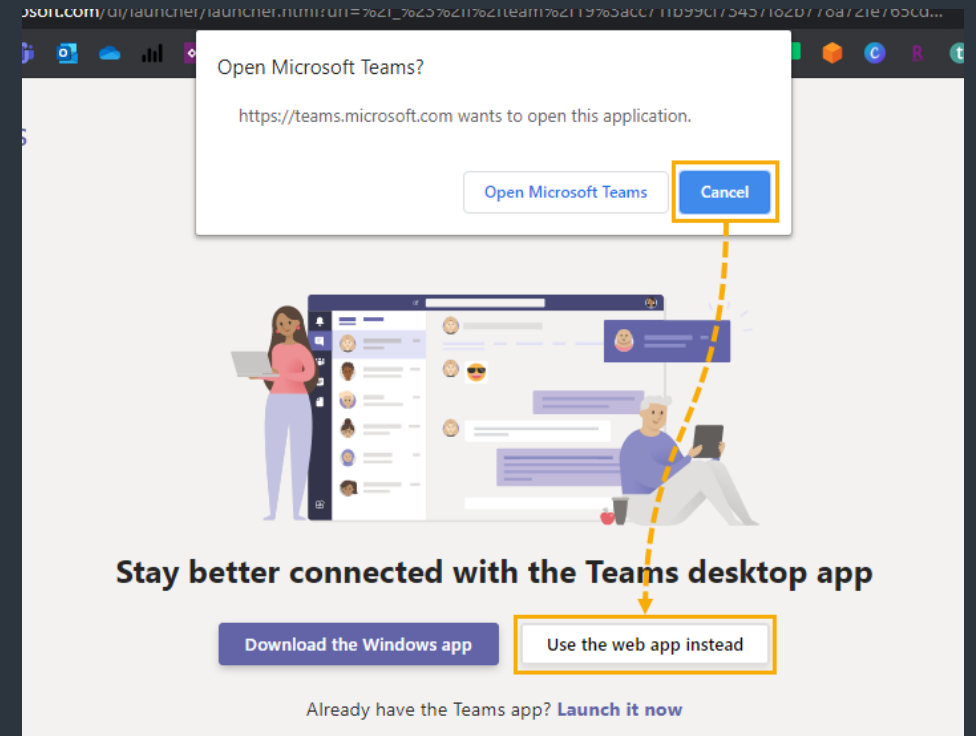


Microsoft Teams

- Connect through Web Browser recommended
- Please enter with camera and microphone turned off
- Turn camera on during introductions and small group breakouts or when you're a speaker (if applicable)
- Please keep your microphone off unless speaking to minimize background noise
- Raise hand to speak or type a question in the chat window
- For help with technical difficulties, email bfrey@Redmond.gov



REDMOND
»»» 2050

Redmond 2050

Community Advisory Committee Kick Off

November 12, 2020



Redmond
WASHINGTON



Comprehensive Planning

Beverly Mesa-Zendt AICP, Deputy Director of Planning

State & Regional Context

Beverly Mesa-Zendt, Deputy Planning Director



What is a Comprehensive Plan

Comprehensive plans are the centerpiece of local planning efforts. A comprehensive plan articulates a series of goals, objectives, policies, actions, and standards that are intended to guide the day-to-day decisions of elected officials and local government staff.

State Planning- The Growth Management Act

RCW 36.70A.130

(1)(a) Each comprehensive land use plan and development regulations shall be subject to continuing review and evaluation by the county or city that adopted them.

King County | Redmond Due 2024

Regional Planning

[Vision 2050 - Regional Plan](#)

[King County Countywide
Planning Policies](#)



Redmond's Comprehensive Plan

Ian Lefcourte, Planner



What is in our Comprehensive Plan?

- 17 Elements
 - 7 Required, per GMA
 - 10 Optional, per GMA
- Many Supporting Documents:
 - Functional Plans, Studies, & Reports



Required Elements



Optional Elements

1. Historic Preservation
2. Annexation Planning
3. Goals, Vision, Framework
4. Human Services
5. Natural Environment
6. Public Participation
7. Urban Centers
8. Neighborhoods (Part 1)
9. Neighborhoods (Part 2)
10. Neighborhoods (Part 3)

Updates to the Comprehensive Plan

The Last Periodic Update - 2011

Other Notable Updates to the Comprehensive Plan (**NOT** a complete list):

- 2013/02/17 - **URBAN CENTERS**
- 2014/03/18 - **HOUSING**
- 2014/06/17 - **LAND USE**
- 2014/10/21 - **NEIGHBORHOODS / LAND USE**
- 2015/04/07 - **LAND USE**
- 2016/03/15 - **ECONOMIC VITALITY**
- 2017/06/06 - **NEIGHBORHOODS / LAND USE**

Redmond 2050 Timeline, Phasing, Themes

Caroline Chapman, Senior Planner



Comprehensive Plan Themes



Equity &
Inclusion



Sustainability



Resiliency



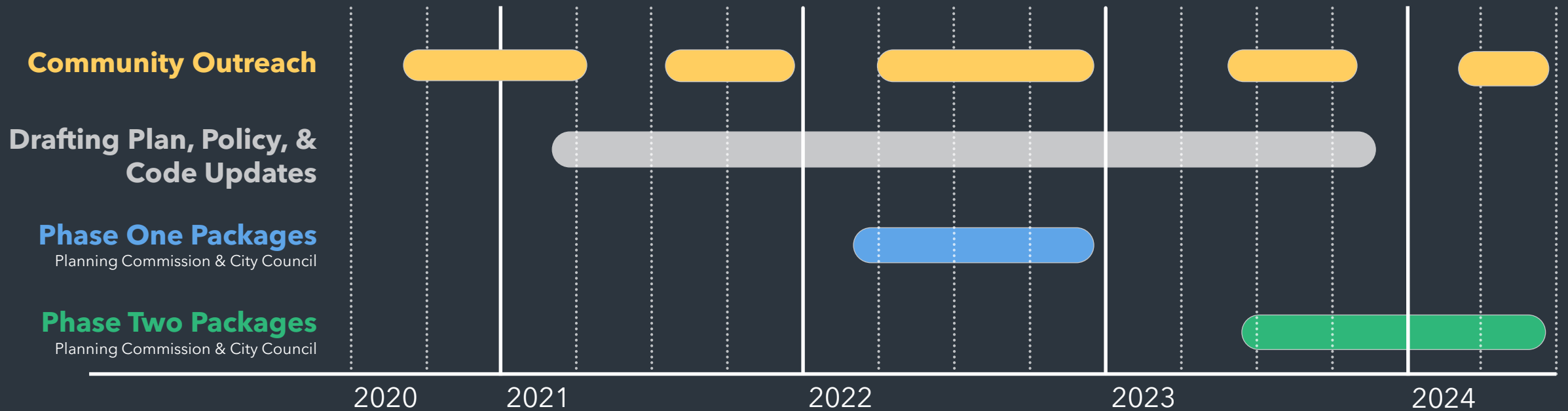
Technology
Forward



Timeline

	Phase One (by 4Q2022)	Phase Two (by 2Q2024)
Priority updates are those needed to:	<ul style="list-style-type: none"> • Advance economic vitality • Address housing affordability • Accommodate the growth allocated to Overlake • Guide transportation decisions and investments 	<ul style="list-style-type: none"> • Implement the Department of Commerce/GMA requirements • Accommodate the growth allocated to Redmond outside of Overlake • Ensure consistency with the Countywide Planning Policies
Comprehensive Plan Element Updates:	<ul style="list-style-type: none"> ➤ Urban Centers ➤ Housing ➤ Economic Vitality ➤ Transportation 	<ul style="list-style-type: none"> ➤ Land Use ➤ Capital Facilities, Utilities ➤ Natural Environment, PAARC ➤ Community Character & Historic Preservation ➤ Human Services ➤ Admin Elements: Goals, Regional Planning, Implementation, Glossary

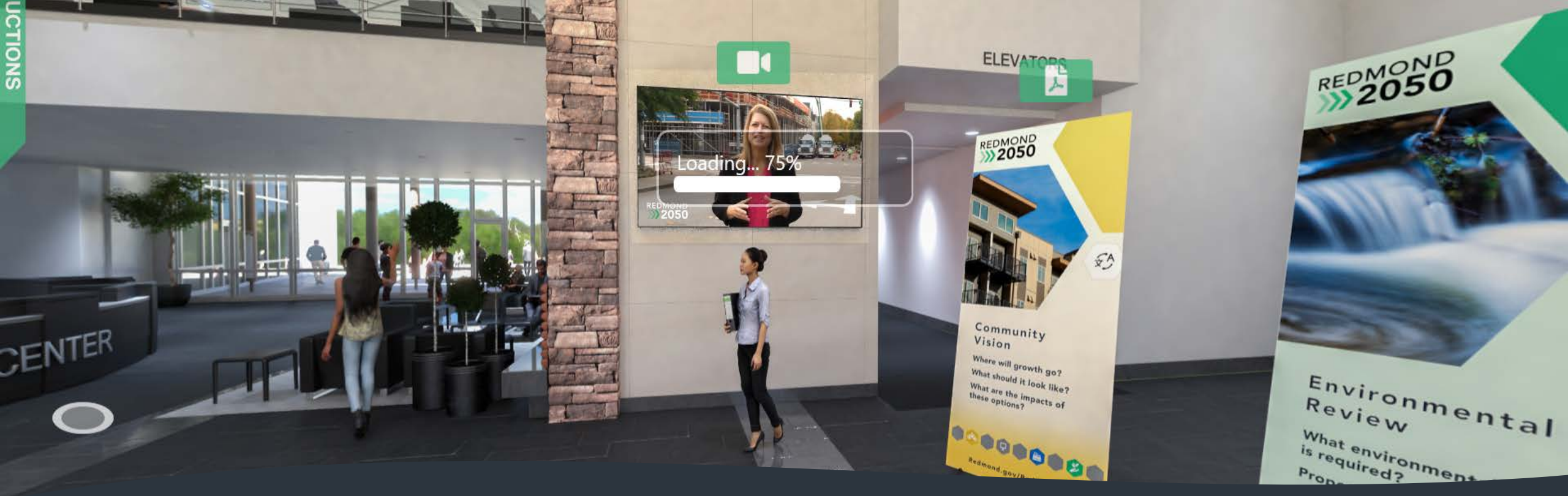
Redmond 2050 Timeline



Public Involvement

Beckye Frey, Senior Planner





Redmond.gov/Redmond2050

Mayor's Message

Environmental Topics Questionnaire (SEPA) - Closes 11/25

Transportation Questionnaire

Transportation Project Map

Alternative Lobby

Redmond 2050

Visión comunitaria

Alcance SEPA

Actualización del plan maestro de transporte



CASA / GOBIERNO / DEPARTAMENTOS DE LA CIUDAD / PLANIFICACIÓN / DESARROLLO DE PLANES Y POLÍTICAS / PLAN INTEGRAL / REDMOND 2050 / VESTÍBULO VIRTUAL / ALTERNATIVA DE LOBBY VIRTUAL / VISIÓN COMUNITARIA

VISIÓN COMUNITARIA

¡Ayude a decidir cómo será Redmond en 2050!

Los números de crecimiento se asignan a las ciudades a través de un proceso de planificación estatal y regional, pero cada comunidad determina:

- cómo se adaptará ese crecimiento,
- cómo se verá,
- y cómo satisfacer las necesidades de la comunidad.

La ciudad de Redmond está llevando a cabo actualmente un proceso de Visión para determinar dónde y cómo se adaptará el crecimiento. Este proceso de Visión se ejecutará entre el otoño de 2020 y la primavera de 2021 e involucrará a la comunidad de Redmond durante todo este tiempo. El trabajo del proceso de Visión informará una actualización del [Plan Integral de Redmond](#).



El proceso de visualización

¿Cómo será el proceso de Visión?

¿Cuánto crecerá la Región?	¿A dónde irá el crecimiento en Redmond?	¿Cómo será el crecimiento?	¿Cuáles son los impactos y cómo se pueden evitar o mitigar?

Recursos Relacionados

- [Sitio web del proyecto Redmond 2050](#)
- [Plan Integral de Redmond](#)
- El plan regional para el crecimiento, [VISIÓN 2050](#), fue desarrollado por el Consejo Regional de Puget Sound (la autoridad de planificación regional) y dirige el crecimiento del empleo y la población a los centros urbanos y las áreas atendidas por el tránsito de alta capacidad.

www.redmond.gov/1482/Community-Vision

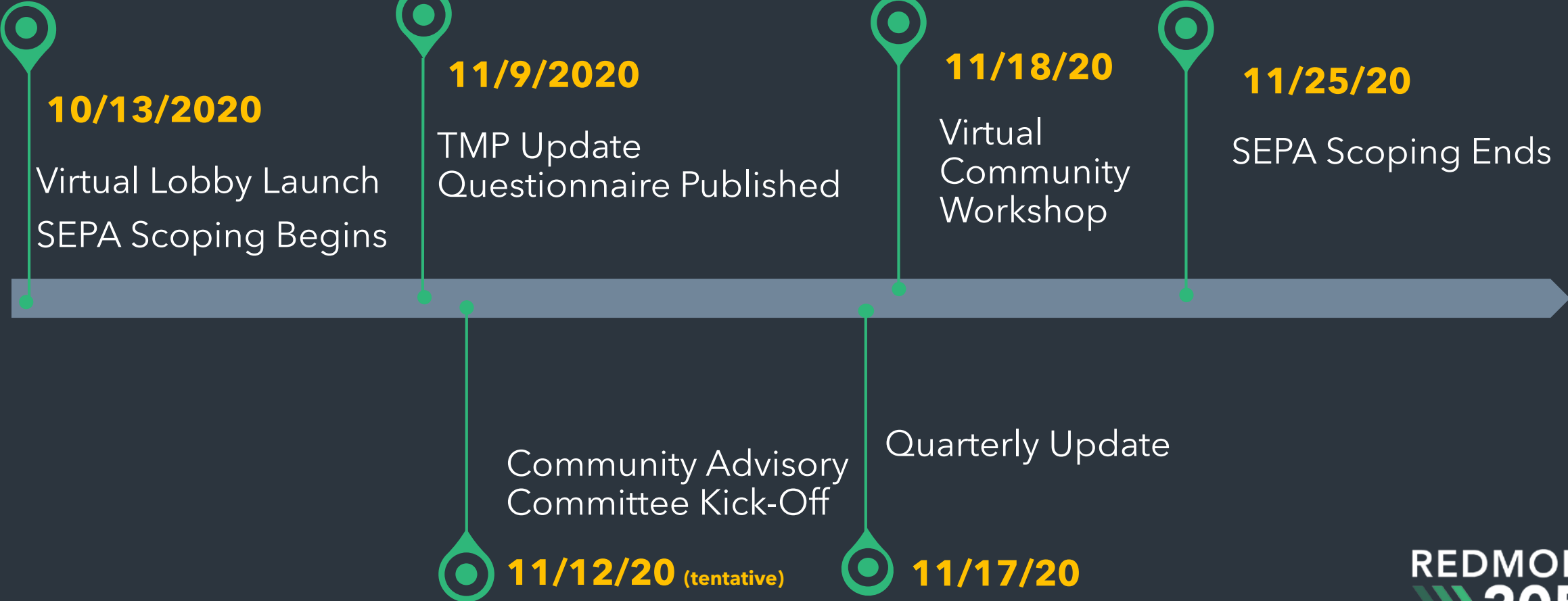
Spanish

Translation Tools & Screen Readers for all Virtual Lobby content

REDMOND
2050



Key Public Involvement Dates



**Environmental
Review (SEPA) |
Public
Involvement
Requirements**
Chapter 43.21.C RCW

- 1. 21 Day minimum Scoping Period** - comment on the range of alternatives, areas of impact, and possible mitigation measures that should be evaluated within the EIS
 - October 13 thru November 25 (44 days)
 - Community meeting on November 18
- 2. Draft EIS review period** - where comments are requested on the merits of the alternatives and the adequacy of the environmental analysis.
 - Mid-2021

TMP Update Outreach: Vision, Values, Priorities

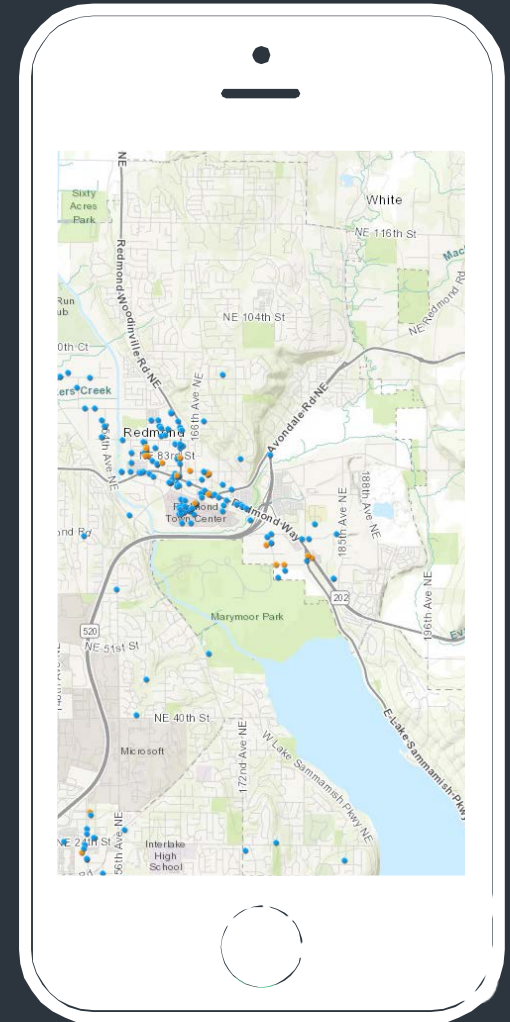


Questionnaire

- What's working/not
- Opportunities and challenges in the future
- Strategies for addressing opportunities, challenges

Map Tool

Ability to identify problem areas, suggest project ideas



Parametric Modeling



Where Should Growth Go?

- How do current regulations perform against growth targets?
- What are options for accommodating job & population growth?
- What are the trade offs between different scenarios?
- What does the community prefer?

Outcomes of Scenarios on:

Sustainability

- Vehicle Miles Traveled
- Tree Canopy
- Energy Consumption

Equity

- Housing Diversity
- Housing Affordability
- Displacement Risk

Resilience

- Access to services (food, parks, schools, transit)



Role of the Community Advisory Committee (CAC)

Jeff Churchill AICP

Community Advisory Committee

- Monthly meetings
- 2-year duration
(Phase One)

**Advise Staff on
Goals & Policies**

**Community
Ambassadors**

**Review
Draft
Documents**



Review of Existing Conditions

Existing Conditions report provides an overview of the current conditions in the City of Redmond and is designed to provide an agreed upon “starting point” by which to move forward with the creation of the community’s vision

- **State and Regional Planning Context**
- **Local Regulations and Plans**
- **Inventory.** Example: current land uses, existing parks, public facilities
- **Level of Service.** How are we performing? Where are the gaps?
- **Trends**
- **Policy Considerations**

Existing Conditions

- Land Use
- Housing
- Natural Resources
- Economic Vitality
- Utilities
- Capital Facilities



REDMOND
 **2050**



Thank You

Any Questions?

