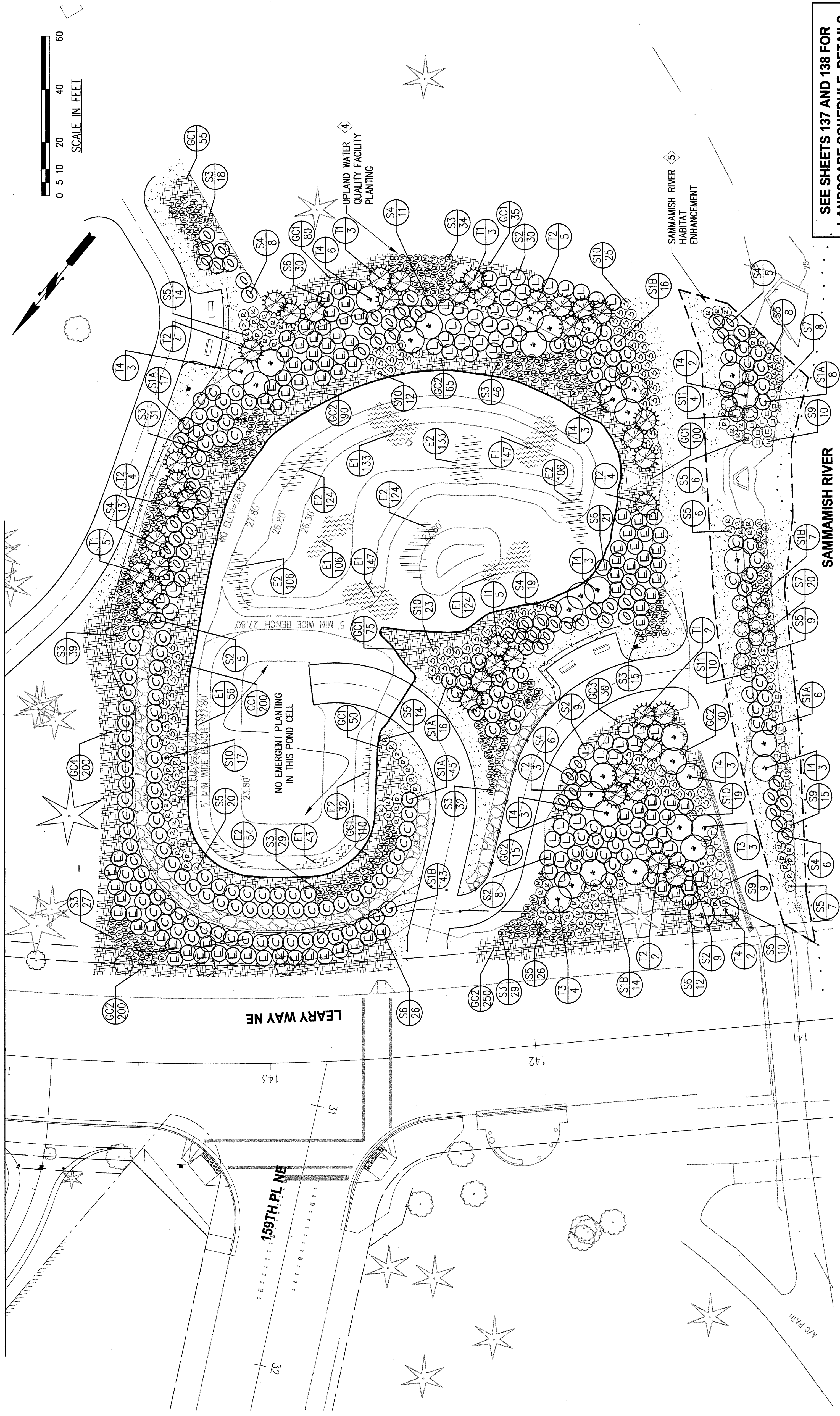


**CONSTRUCTION NOTES**

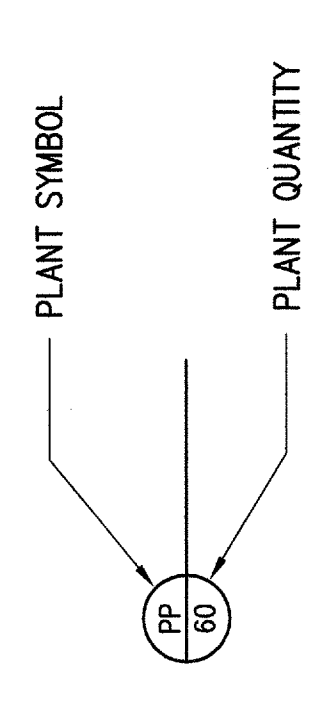
- 4 WATER QUALITY FACILITY AND UPLAND PLANTING INCLUDING SEEDED AREAS TO RECEIVE 6" OF FINE COMPOST ABOVE ELEVATION 33.0 (EDGE OF WETPOND LINER). TILL 3" COMPOST 12" INTO EXISTING SUBGRADE, THEN APPLY REMAINING 3" LIFT. APPLY 2" OF COARSE MULCH OVER THIS ENTIRE AREA EXCEPT SEEDED AREAS. WATER QUALITY FACILITY BELOW ELEVATION 33.0 TO RECEIVE 24" OF TOPSOIL TYPE A PER SHEET 62.
- 5 SAMMAMISH RIVER HABITAT ENHANCEMENT TO RECEIVE 8" OF TOPSOIL TYPE A AFTER EXCAVATION AND REMOVAL OF WEEDS AND NON-NATIVE SPECIES PER SHEET 28 AND 2" OF COARSE MULCH.

MATCH LINE STA 144+00 SHEET 134



**CORRESPONDING SHEETS**

CATEGORY	SHEET
EXISTING CONDITIONS	18
SITE PREPARATION	28
PLAN	39
PROFILE	58
INTERSECTION	
SEWER & WATER	
SEWER PROFILE	
WATER PROFILE	
JOINT TRENCH	
URBAN DESIGN	108
LANDSCAPE	133
IRRIGATION	122
ILLUMINATION	
CHANNELIZATION	176
RIGHT-OF-WAY	187



**SEE SHEETS 137 AND 138 FOR LANDSCAPE SCHEDULE, DETAILS AND GENERAL NOTES**

**WATER QUALITY FACILITIES AND SAMMIMISH RIVER HABITAT ENHANCEMENT AREA**

	 <p><b>City of Redmond</b> W A S H I N G T O N</p>	<p>765 8th Avenue N Seattle, WA 98109 (206) 286-1640</p> <p><b>KPG</b> Architecture Landscape Architecture Civil Engineering Urban Design</p>	<p>16870 N.E. 95TH STREET P.O. BOX 97010 REDMOND, WA 98073-9710 PH. (425) 566-2701</p>	<p>DESIGNED BY: LGS DRAWN BY: LGS CHECKED BY: NJD DATE: 5/08 FILE: 04631.PN08.dwg</p>	<p>SECTION: 11 &amp; 12 TOWNSHIP: T25N RANGE: R5E</p>	<p><b>BEAR CREEK PARKWAY EXTENSION</b> NE REDMOND WAY TO NE 74TH ST</p> <p><b>WATER QUALITY FACILITY LANDSCAPE PLAN</b></p>	<p>PROJECT NO. <b>03-C1-70</b></p> <p>SHEET <b>133</b> OF <b>187</b></p>

