

TRANSPORTATION MASTER PLAN UPDATE

Planning Commission Briefing

August 12, 2020

REDMOND
2050

Purpose

- TMP basics
- Describe TMP update need, objectives, scope, and schedule
- Answer initial questions from Commissioners



Plan Update Context

- Part of *Redmond 2050 Phase 1*
- Relies on *Redmond 2050* visioning
- Common SEPA document
- Common outreach plan



What is the TMP?

- Vision
- Policy
- Investment plan



What is in the TMP?

- Transportation trends and conditions
- Performance measures
- System plans
- Regional transportation
- Maintenance and operations
- Transportation Facilities Plan
- Three-Year Action Plan
- Appendices

TMP Update Need

- Changes since 2013
- Comprehensive Plan, VISION 2050
- Infrastructure to support growth
- Design guidance updates
- Travel behavior assumptions



TMP Update Objectives

- Update TMP strategic framework consistent with Comprehensive Plan, VISION 2050
- Update TMP elements consistent with strategic framework
- Extend TFP planning horizon to 2045
- Update concurrency and impact fees

TMP Update Scope

In short, update the entire TMP

- Transportation Element of Comprehensive Plan
- TMP, including TFP
- Concurrency
- Impact fees



TMP Update Schedule

	2020	2021	2022
Strategic Framework and Policy Development	██████████		
Project List Development	██████████		
Outreach, Engagement	██████████	██████████	██████████
Future Year Modeling		██████████	
Environmental Review	██████████	██████████	██████████
Document Writing		██████████	
Adoption Process			██████████

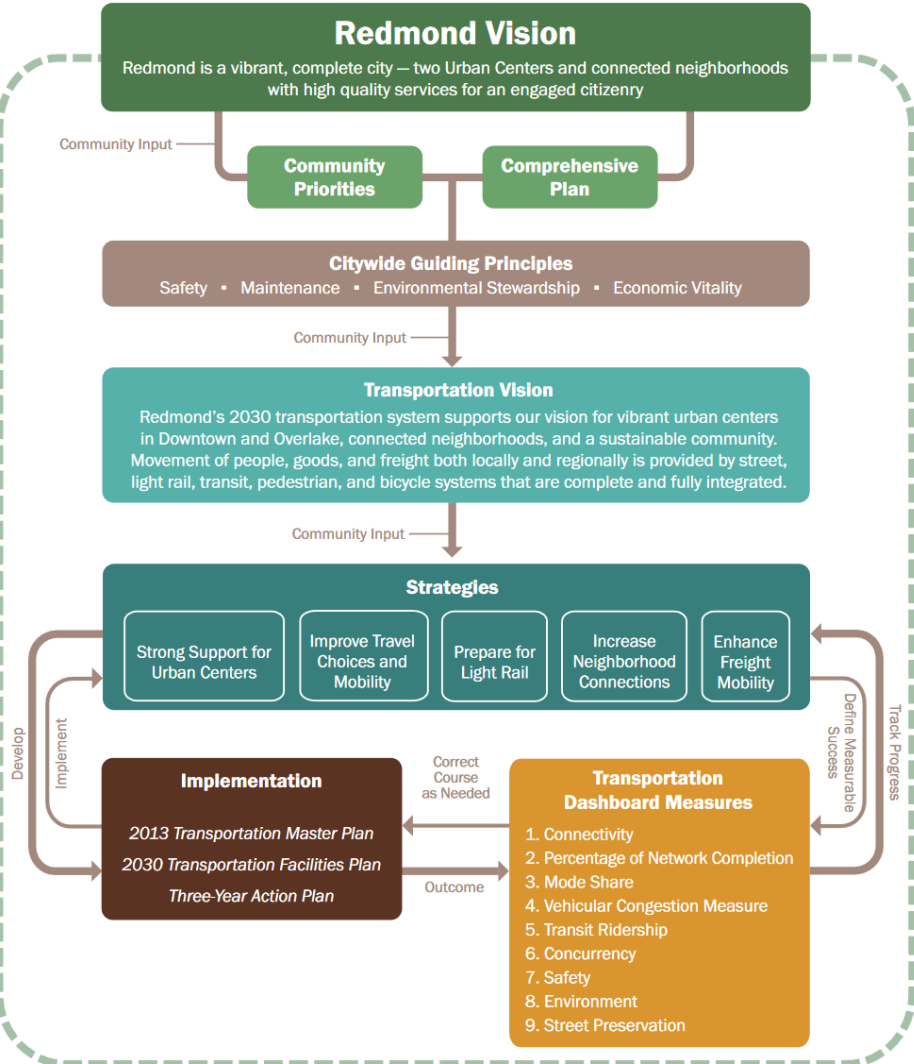
2030 Transportation Vision

REDMOND
»»» 2050

Redmond's 2030 transportation system supports Redmond's vision for vibrant urban centers in Downtown and Overlake, connected neighborhoods and a sustainable community.

Movement of people, goods, and freight both locally and regionally is provided by street, light rail, transit, pedestrian, and bicycle systems that are complete and fully integrated.

2030 Strategic Framework



Next Steps

Develop draft materials for initial community engagement: strategies, policy, capital investment

An architectural rendering of a modern transit station at night. The station features a prominent concrete overpass with a metal railing. Below the overpass, a large glass entrance is illuminated from within. A sign above the entrance reads "DOWNTOWN REDMOND". People are shown walking on the sidewalk, including a person in a wheelchair. The scene is lit with warm interior lights and cool exterior streetlights, creating a vibrant urban atmosphere.

Thank you. Any questions?

Redmond.gov/TMP

Jeff Churchill, Transportation Strategic Advisor
jchurchill@redmond.gov or 425-556-2492

REDMOND
2050