

Gudev Short Plat

June 11th, 2020

Neighborhood Meeting

LAND-2019-01270

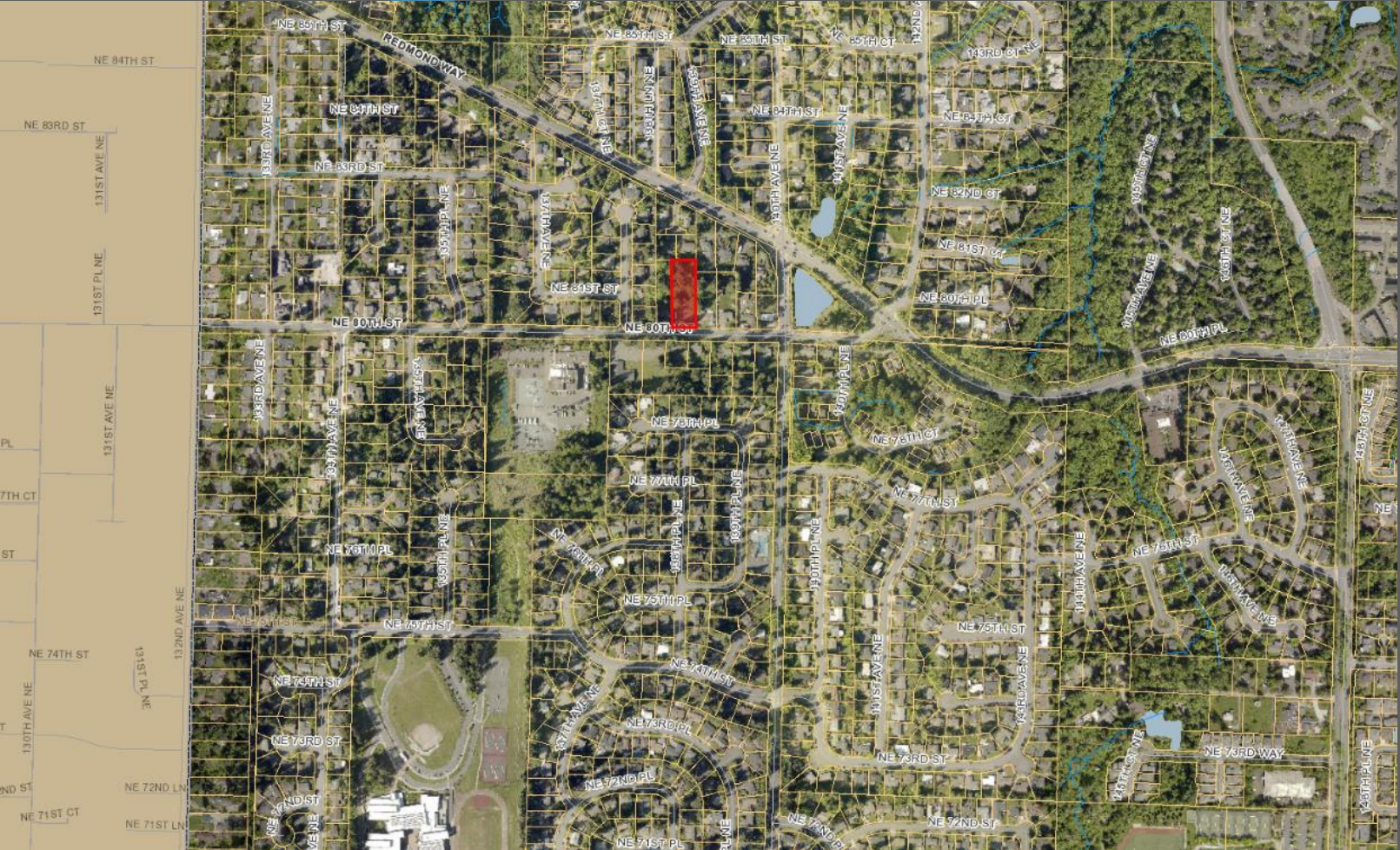
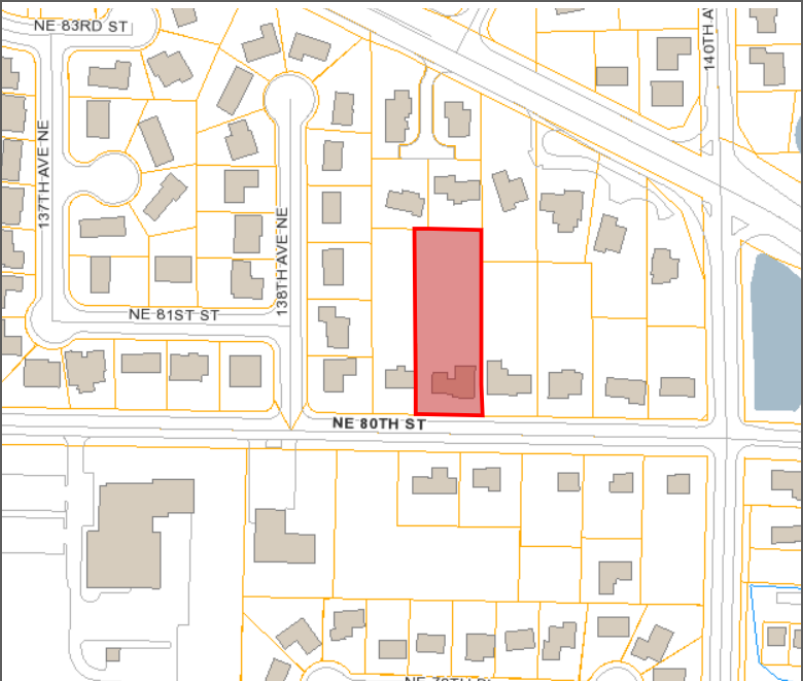
Agenda

- Welcome & Introduction
- General Site Information
- Project Details
- Short Plat Permit Outline (Type II)
- Type II Decision Process/ Next Steps
- Questions & Answers

General Site Information

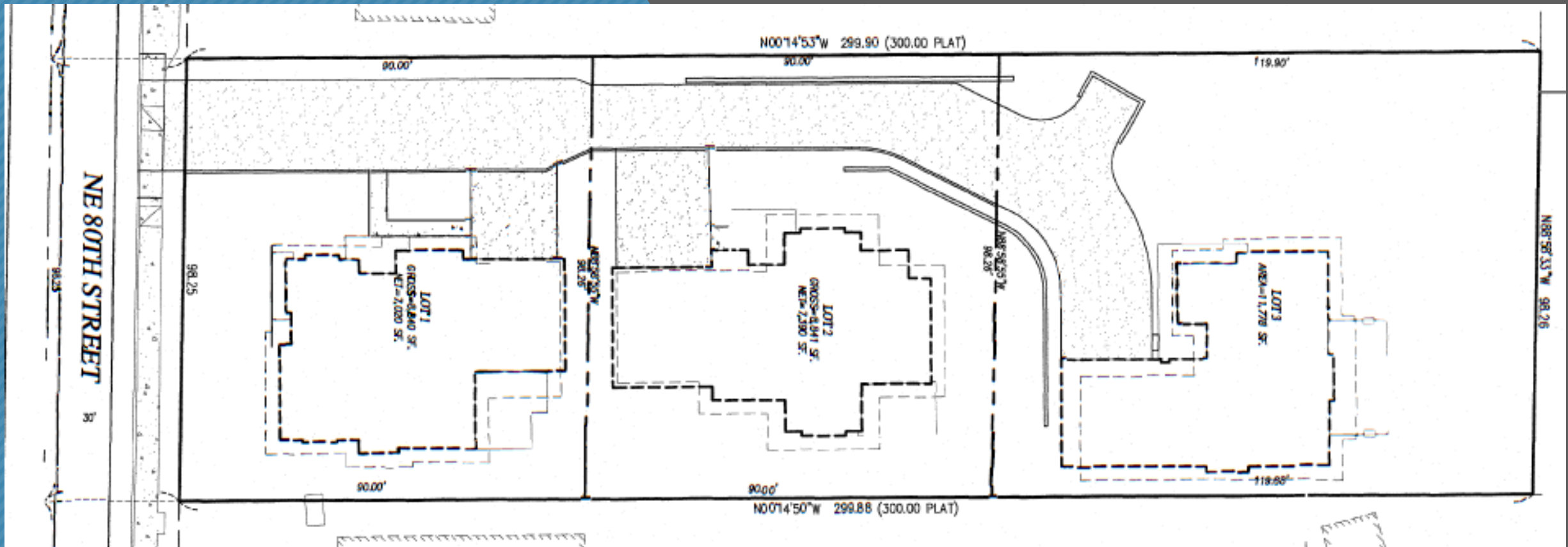
- NEIGHBORHOOD: Grass Lawn
- ZONE DISTRICT: R-4 Single-Family Urban Residential
- CURRENT USE: One single-family homes
- AREA SIZE: 0.67 acres

Vicinity Map



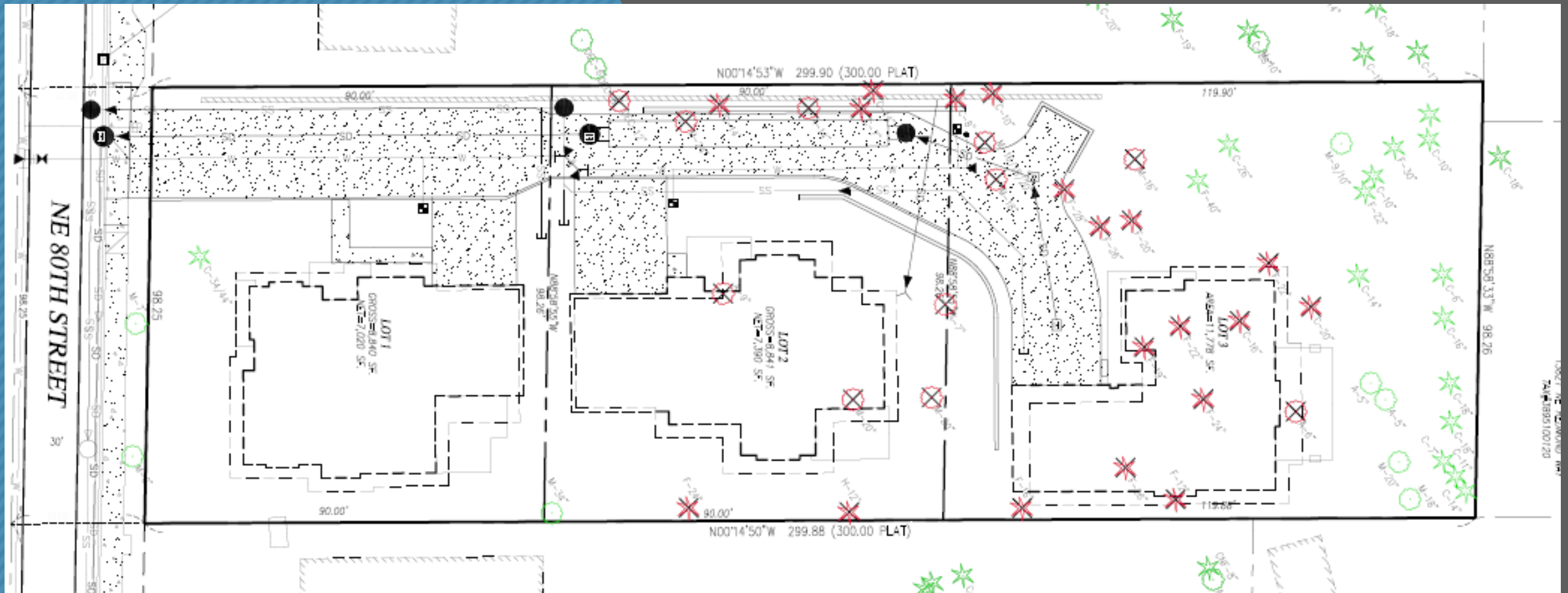
Project Details: Site Plan Area

- .67 acres
- One existing single-family homes to be demolished
- Proposal to short plat into 3 single-family lots
- Project will have one shared access corridor

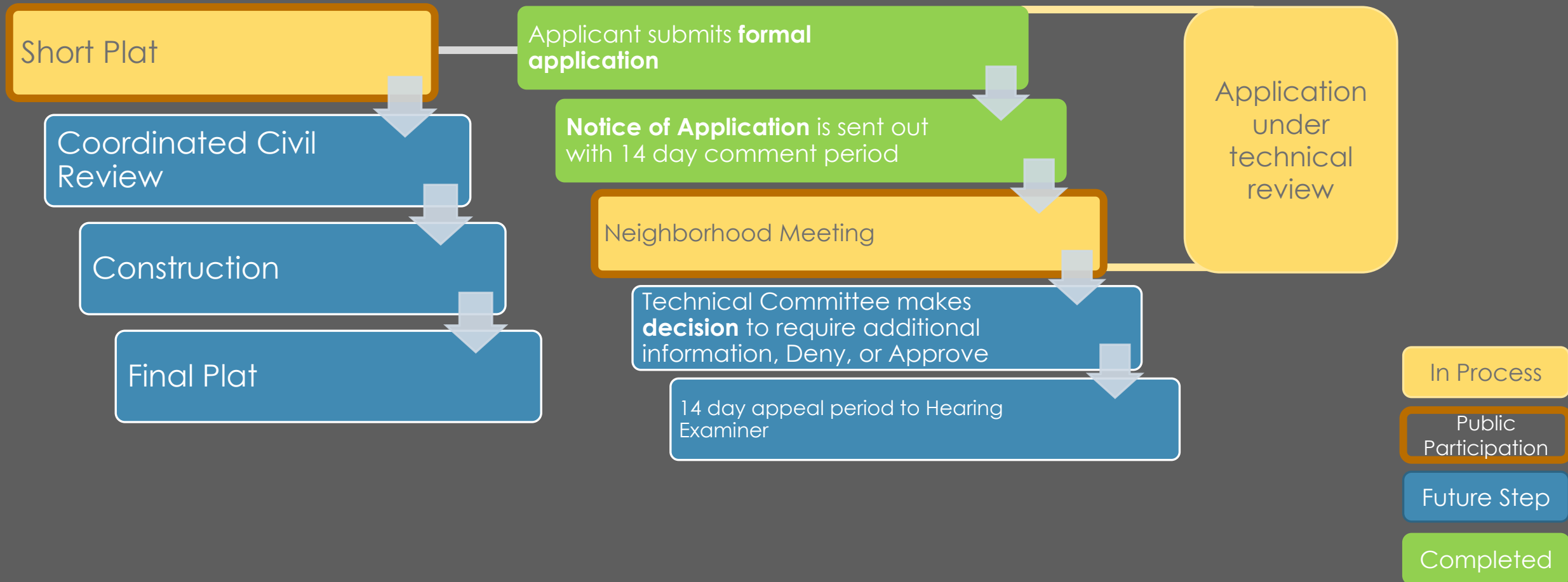


Project Details: Tree Retention

Proposed 50% on-site tree retention,
therefore, complies with 35% tree
retention requirement.



Type II Process Flow Chart



Questions

City Contact Information,

Andrea Kares, Planner

425.556.2440

akares@redmond.gov

Applicant Contact Information

Mark Trembach, Ecoline Group

701.660.9422

mark@ecoclinegroup.com

City of Redmond Website

www.redmond.gov