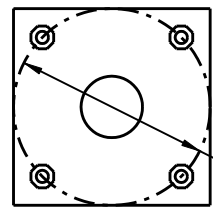


NOTE:  
REFER TO REDMOND DETAIL 421 FOR  
LUMINAIRE WIRING AND J-BOX.



BOLT CIRCLE  
11-1/2 " (MBO-6-10)

**BASE PLATE**  
NO SCALE

APPROVED: <u>DON CAIRNS</u> REV. DATE: <u>NOVEMBER 01, 2005</u>			<b>STANDARD DETAILS</b>	
			<b>CONCRETE OCTAGONAL POLE</b>	
TRANSPORTATION DIVISION			FILE	SD430.DGN
			DRAWING NO.	<b>430</b>