



3 COMMUNITY INVOLVEMENT

Contents

3.1 Visioning..... 3-3

3.2 Review of Draft Plan 3-11

3.3 SEPA Review..... 3-11

Exhibits

Exhibit 3-1: Community Advisory Committee Invitees and Participants..... 3-4

Exhibit 3-2: Invitation to Visioning Community Meetings..... 3-5

Exhibit 3-3: Steering Committee Members 3-7

Exhibit 3-4: SEPA Review Process 3-12

Attachments

- 3A: Visioning Presentation and Pulse Pad Questions
- 3B: On-line Survey Results
- 3C: Telephone Survey Results
- 3D: Recreation Facility Study Survey Results

3 COMMUNITY INVOLVEMENT



3 COMMUNITY INVOLVEMENT

Community involvement is of utmost importance to the City of Redmond. In fact, the City's number one framework policy is:

FW-1 Encourage active participation by all members of the Redmond Community in planning for Redmond's future.

Whenever a new comprehensive planning document, functional plan, or master plan is prepared, there are a series of opportunities for the public to be involved, from the visioning process to the approval process. This chapter describes the community involvement process for this Plan.

3.1 Visioning

The Parks and Recreation Department proposed a major revision to the 2004 PRO Plan, since a major update of the plan had not been conducted in more than 12 years and the City has undergone a significant amount of growth and change during that time. Therefore, the City tried to involve as many groups as possible in the visioning process, reaching out to city residents, employees, user groups, and people who use the Redmond parks and recreation system who live outside the city limits.

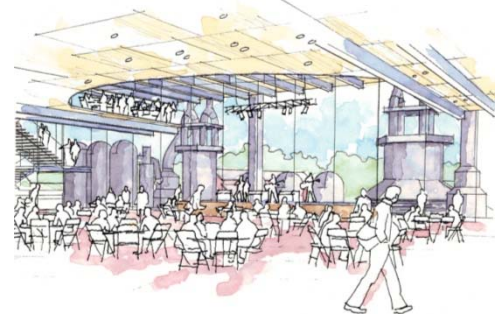
The groups contributing to the community involvement process included:

- Citizens Workgroup
- Community Advisory Committee
- Public in three public meetings
- Parks and Trails Commission
- Arts Commission
- Pedestrian and Bicycle Advisory Committee
- Neighboring jurisdictions
- Planning Commission
- City Council
- City Steering Committee

Citizens Workgroup

The Citizens Workgroup was comprised of one to three leaders from each neighborhood who have been involved in neighborhood planning or a City Commission or Committee and have a good understanding of their neighborhood's values.

Visioning Concepts



An indoor performance center



An urban park



A place of respite

3 COMMUNITY INVOLVEMENT



Community Advisory Committee

The Community Advisory Committee was comprised of representatives from leagues and sports organizations, trail user groups, environmental groups, and arts organizations. The invitation list is provided in the following exhibit.

Exhibit 3-1: Community Advisory Committee Invitees and Participants

Arts	Trails	Active Recreation	Passive Recreation
Arts Community Representatives	<i>Cascade Bicycle Club</i>	Cricket Group	WSU King County Extension - Master Gardeners
Arts Commission Representatives	Interlaken Trailblazers Volkspport Club	<i>Disc Golf Group</i>	<i>Cascade Land Conservancy</i>
Redmond Band Boosters	Lake Washington Saddle Club	<i>NW Parks</i>	Redmond Chamber of Commerce
Redmond Drama Boosters	<i>KC Executive Horse Council</i>	Eastside Rugby Football Club	Redmond Historical Society
Redmond Orchestra Boosters	<i>Evergreen Mountain Bike Association</i>	Lake Washington School District	Friends of Marymoor
Redmond Association of SpokenWord		<i>Lake Washington Youth Soccer Association</i>	Redmond Rotary
<i>Second Story Repertory</i>		<i>Redmond North Little League</i>	Redmond Rousers Rotary
<i>Redwood Theater</i>		<i>Redmond West Little League</i>	East Lake Washington Audubon
Eastside Symphony Orchestra		<i>Arena Sports</i>	<i>Watertenders</i>
<i>Eastside Association of Fine Arts</i>		Youth Sports Advocate	Trout Unlimited – Issaquah chapter
<i>Studio II Gallery</i>		<i>Adult Soccer</i>	
Soul Food Books		Youth Basketball/Recreation Advocate	
		Adult Softball	
		Eastside Lacrosse Club	
		Redmond Junior Mustangs Football	
		Eastside Girls Youth Lacrosse	
		ADA Representative	

Italics indicate the representative participated in meetings.

3 COMMUNITY INVOLVEMENT

Community Meetings

Three public meetings were held across the city and throughout the course of a month to try to attract as many community members as possible to the meetings.

Exhibit 3-2: Invitation to Visioning Community Meetings



ATTEND ONE OF THREE MEETINGS TO SHARE YOUR IDEAS:

- 1 April 15, 2009, 6:30 to 8:30pm
Audubon Elementary
Gymnasium
3045 180th Ave NE, Redmond
- 2 April 23, 2009, 6:30 to 8:30pm
Redmond Junior High
The Commons
10055 166th Ave NE, Redmond
- 3 May 6, 2009, 6:30 to 8:30pm
Old Redmond Schoolhouse
Community Center Auditorium
16600 NE 80th St, Redmond

IF YOU CANNOT ATTEND ANY OF THE MEETINGS,
PLEASE TAKE A FEW MINUTES TO COMPLETE
OUR ON-LINE SURVEY AT WWW.REDMOND.GOV/SURVEY
OR CONTACT US FOR A PRINTED COPY.

For more information, please contact:
Carolyn Hope, Senior Park Planner
425-556-2313 or chhope@redmond.gov

The total attendance for the three meetings is estimated at 62 people from sign in sheets. The same presentation and meeting format was used for each of the three community meetings, which included:

- A 20-minute presentation, as provided in Attachment 3A,
- An interactive, live, pulse pad survey, as provided in Attachment 3A,
- Break-out groups of Parks, Trails, Recreation, and Art interests where community members could relay their ideas and questions to staff, and
- Opportunities to provide written comments.

Parks and Trails Commission

The Parks and Trails Commission underwent a similar visioning process as the public, but also conducted a Strengths, Weaknesses, Opportunities, and Threats (SWOT) process as part of visioning. The commission was updated on the progress of the plan nearly monthly and asked for input on various decisions.

3 COMMUNITY INVOLVEMENT



Arts Commission

The Arts Commission was provided with a visioning presentation and the commissioners talked about their vision. In addition, the Arts Commission updated their Strategic Plan in 2009, which is incorporated into this report.

Pedestrian and Bicycle Advisory Committee

Staff provided the Pedestrian and Bicycle Advisory Committee with a visioning presentation and the commissioners provided feedback on their vision. In addition, staff sought more specific input from the committee on proposed trail alignments and projects.

Neighboring jurisdictions

Park planning staff met with neighboring jurisdictions on various occasions to discuss the broad-scale goals of the plan, changes to the level of service approach and to discuss partnership opportunities. The following meetings were held:

- Eastside Parks Directors – April 2009
- Eastside Park Planners – May 2009, November 2009
- City of Bellevue – July 2009
- City of Sammamish – November 2009
- City of Kirkland – October 2009
- City of Renton – January 2010
- King County – November 2009
- Lake Washington School District – November 2009 and December 2009

Planning Commission

Staff provided the Planning Commission with a visioning presentation and the commissioners provided feedback on their vision. In addition, staff made two presentations to Planning Commission on the proposed level of service policies.

City Council

The City Council was briefed on the results of the visioning process, where they also made comments about their vision for the parks system. In addition, staff made a presentation to Council on the proposed level of service policies.

City Steering Committee

In addition, a Steering Committee of interdepartmental leaders from throughout the City was formed to review the proposed visioning process, help identify community members and groups to invite to the Citizens Workgroup and

3 COMMUNITY INVOLVEMENT

Community Advisory Committee, and as a sounding board for the next steps of the plan. Members of the Steering Committee included:

Exhibit 3-3: Steering Committee Members

Name	Title	Department
Craig Larsen Jean Rice	Director Financial Management Analyst	Parks
B Sanders	Senior Planner	
Carolyn Hope	Senior Planner	
Greg Byszieski	Deputy Director	
Sandra Bettencourt	Recreation Manager	
Lori Peckol	Policy Planning Manager	
Roger Dane Tim Cox	Senior Planner Special Projects Manager	Natural Resources Natural Resources/Parks
Joel Pfundt	Principal Transp. Planner	Public Works - Transportation
Malisa Files Shannon McCoy	Financial Planning Manager Financial Analyst	Finance
Ron Grant	Asst. Director	Public Works

In addition to meetings, an online survey and a telephone survey were implemented to measure park usage and gauge community members' interest in various potential park projects.

3.1.1 On-Line Survey

An on-line survey was conducted through a web-based survey company called Zoomerang. A direct link to the survey was provided on the City website. The survey was advertised on the city-wide public meeting invitation, press releases, and announcements at meetings. This survey was open to any interested party, which allowed Redmond park users who live outside the city limits and people who work in Redmond, but don't live in Redmond an opportunity to provide feedback. Two other surveys conducted by phone and mail were limited to Redmond residents.

This on-line survey resulted in 216 responses, but was not statistically valid, because it did not require a specified number of people from each geographical area to answer the survey, and was self-selecting. The results of the on-line survey are provided in Attachment 3B.

3 COMMUNITY INVOLVEMENT



3.1.2 Telephone Survey

A telephone survey was conducted by EMC Research, Inc. following the completion of the on-line survey. The visioning process led to interesting results that the City wanted to validate with a statistically valid study. In addition, this survey was used as a way to quantify demand for un-programmed parks and recreation facility use such as walking in parks, using drop in programs, and similar types of activities. In July 2009, EMC developed a telephone survey with City staff that was answered by 300 Redmond adult residents 18 years and older using random digit telephone dialing. The overall margin of error for the survey results was +/- 5.7 points, with a 95% confidence level. The results of the telephone survey are provided in Attachment 3C.

Public Opinion Surveys



3.1.3 Mail/Telephone Survey

As part of the Recreation Buildings Design Study, a survey was developed and conducted by Leisure Vision, who worked with City of Redmond officials, as well as members of the Ballard, King and Associates project team in the development of the survey questionnaire. The purpose of the survey was to establish priorities for possible renovation or expansion of existing recreation buildings, or consideration for new construction. The survey was administered by a combination of mail and phone to 327 Redmond households. The results of the random sample concluded in a statistically valid survey with a 95% level of confidence with a precision of at least +/-5.4%. The results of this survey are provided in Attachment 3D.

3 COMMUNITY INVOLVEMENT

3.1.4 Summary of Public Comments and Goals

Upon completion of the visioning process and the three surveys described above, staff analyzed the data to develop the community's priority goals for the PARCC Plan, as described below.

Priority Goals:

- Walkable communities - Connections between parks & neighborhoods
- Diverse park uses
- Sustainable park design

Priority Programs:

- Aquatics
- Nature and environmental education
- Fitness programs
- Drop-in programs

Priority Projects:

1. Indoor Aquatics Center
2. Open space
3. Neighborhood Parks
4. Community Parks
5. Trails
6. Indoor Recreation Facility/Community Center
7. Performing Arts Center



Sustainably designed pavilion at Grass Lawn Park



Example of environmental education center, Mercer Slough in Bellevue, WA.



Example of an indoor aquatics center in Federal Way, WA.

3 COMMUNITY INVOLVEMENT

More specific comments are described by park system element:

Parks

- Cross-program fields for multi-purpose uses
- Use sustainable construction methods
- Provide environmental education and interpretation
- Secure long term location for disc golf
- Develop P-patch or community gardens
- Improve skate park or add another more advanced
- Provide pet friendly parks or off-leash parks

Trails

- Complete trail connections
- Provide the ability to walk to park or trail in neighborhood
- Develop park, trail and wayfinding signage
- Continue and improve access for equestrians & mountain bikers on soft surface trails
- Develop easier kayak launches and marked water trail along Sammamish River and elsewhere
- Provide more trail amenities (benches, resting areas)
- Provide education on safe multi-purpose trail use

Arts & Culture

- Use art and cultural programs as economic stimulus to Redmond businesses
- Establish Downtown as a destination including signature park, art, and performing arts center
- Develop art on trails, gateways, and downtown
- Develop artist studio space
- Provide art you can touch, play with, interact with
- Offer Festivals (film, art, canoe, music)

Recreation

- Provide indoor fitness facility
- Provide indoor pool and aquatics center
- Develop an environmental education center
- Provide drop-in indoor active space and playground
- Sponsor drop-in outdoor programs (kayak, rock climbing)
- Schedule more programs for working seniors



Hartman Park Multi-Use Turf Fields for soccer and baseball



Much more work is necessary to complete the trail network, Bear-Evans Creek Trail above.



Yoga class in a cramped space.

3 COMMUNITY INVOLVEMENT

3.2 Review of Draft Plan

The Draft PARCC Plan was published on the City website on January 25, 2010, which was the beginning of a 30-day public comment period that ended on February 26, 2010. During that time, staff met with all of the same people and groups, as they did during the visioning process, and there was one public meeting. After the comments were received, staff finalized the PARCC Plan and prepared a State Environmental Policy Act (SEPA) Checklist and Development Guide Amendment (DGA) Application to amend the Comprehensive Plan with the policy changes contained within this plan.

3.3 SEPA Review

The SEPA, Chapter 43.21C RCW, requires all governmental agencies to consider the environmental impacts of a proposal before making decisions, including non-project actions or planning documents for future projects. The lead agency (the City) will review the environmental checklist and other information available on the proposal and evaluate the proposal's likely environmental impacts. After evaluating the proposal and identifying mitigation measures, the lead agency must determine whether a proposal would still have any likely significant adverse environmental impacts. The lead agency issues either a determination of non-significance (DNS), which may include mitigation conditions, or if the proposal is determined to have a likely significant adverse environmental impact, a determination of significance/scoping notice (DS/Scoping) is issued and the environmental impact statement (EIS) process is begun. The EIS would analyze alternatives and possible mitigation measures to reduce the environmental impacts of the proposal.¹

What is mitigation?

During the SEPA review, applicants must identify potential impacts to the natural environment, such as a project that is proposed in a wetland. The applicant must try to avoid impacts to the wetland and in the worst case, the applicant will have to mitigate for them by building a new wetland nearby, preferably on the same site.

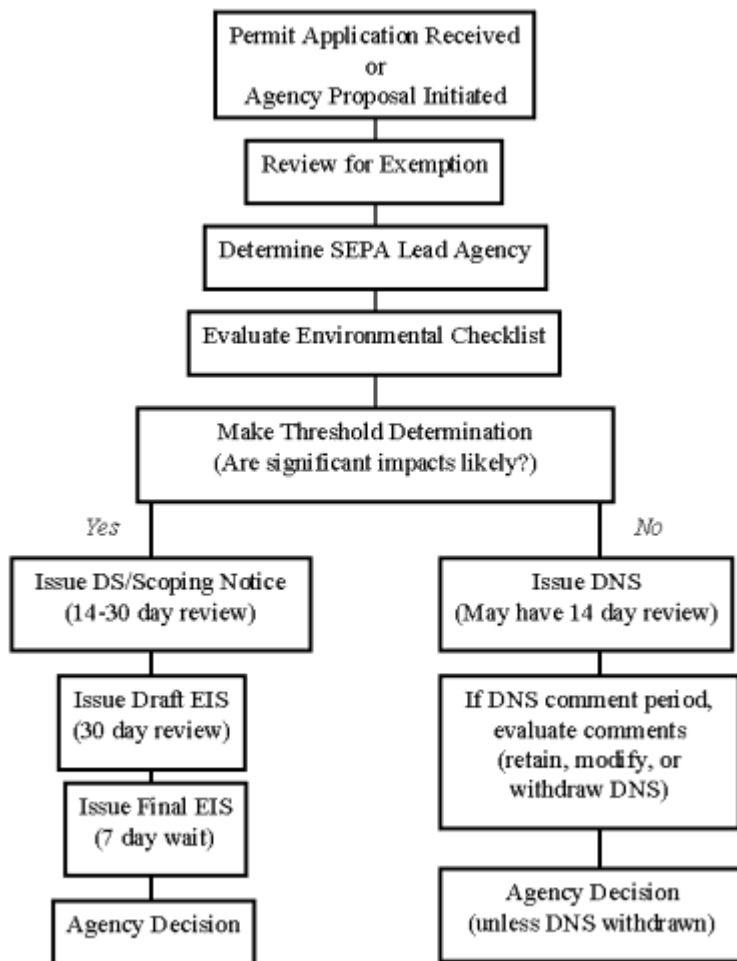
If a DNS is issued on the proposal, then a 14-day public comment period is required. Notice of the comment period should be sent to the Department of Ecology; all agencies with jurisdiction; affected tribes; and all local agencies or political subdivisions whose public services would be affected by the proposal [WAC 197-11-340(2)(b)]. The public notice procedures will generally include publishing the notice in a newspaper and on the City website. After the comment period, the SEPA official must respond to comments in a timely manner and offer a ten day appeal period. The following exhibit provides a flow chart of the SEPA process.

¹ Washington Department of Ecology, 2003. SEPA Handbook. Ecology Publication No. 98-114. <http://www.ecy.wa.gov/programs/sea/sepa/handbk/hbch02.html#2-1>

3 COMMUNITY INVOLVEMENT



Exhibit 3-4: SEPA Review Process



Source: SEPA Handbook, 2003.

The final version of this plan will include the completed SEPA checklist.