

## AM NO. 10-109

**MEMO TO:** Mayor Marchione and City Council Members

**FROM:** Rob Crittenden, Traffic Operations Manager 425-556-2838  
Deby Alm, Senior Transportation Engineering Technician 425-556-2752

**DATE:** May 18, 2010

**SUBJECT: STAFF REPORT: NOTIFICATION OF TEMPORARY CLOSURE OF NE 116<sup>th</sup> STREET BETWEEN AVONDALE ROAD AND REDMOND-WOODINVILLE ROAD, LATE JUNE THROUGH AUGUST 2010**

In accordance with the Redmond Municipal Code section 10.24.047 "Procedure for temporary closure or restriction," I am notifying Council of a temporary closure for through traffic on NE 116<sup>th</sup> Street between Avondale Road and Redmond-Woodinville Road.

NE 116<sup>th</sup> Street is classified as a minor arterial street. Average daily traffic on NE 116<sup>th</sup> Street between Avondale Road and Redmond-Woodinville Road is approximately 8,400 vehicles per day. The purpose of the road closure is to construct street improvements which include roadway widening and lowering the roadway to improve sight distance. The road project is part of the frontage improvement conditions required for development of Fire Station No. 17 located on the south side of NE 116<sup>th</sup> Street, immediately east of 169<sup>th</sup> Place NE.

City staff has determined that a full closure is the safest and most efficient method to reconstruct the road. The point of closure will be on NE 116<sup>th</sup> Street between 167<sup>th</sup> Place NE and 172<sup>nd</sup> Avenue NE. Access will be maintained for local residents. Detour signage will be in place directing motorists to alternative routes. The closure will take place from mid-June through the end of August 2010. Construction is scheduled to be substantially completed and the road open before school sessions resume in September.

The construction on 116<sup>th</sup> will occur during the same time frame as the intersection improvement project at SR 202 and NE 124<sup>th</sup> Street. Due to the concurrent disruptions to these two major east-west corridors through Redmond, the City plans to provide project information to residents through multiple channels. The attached Communications Plan provides detail of this information sharing.

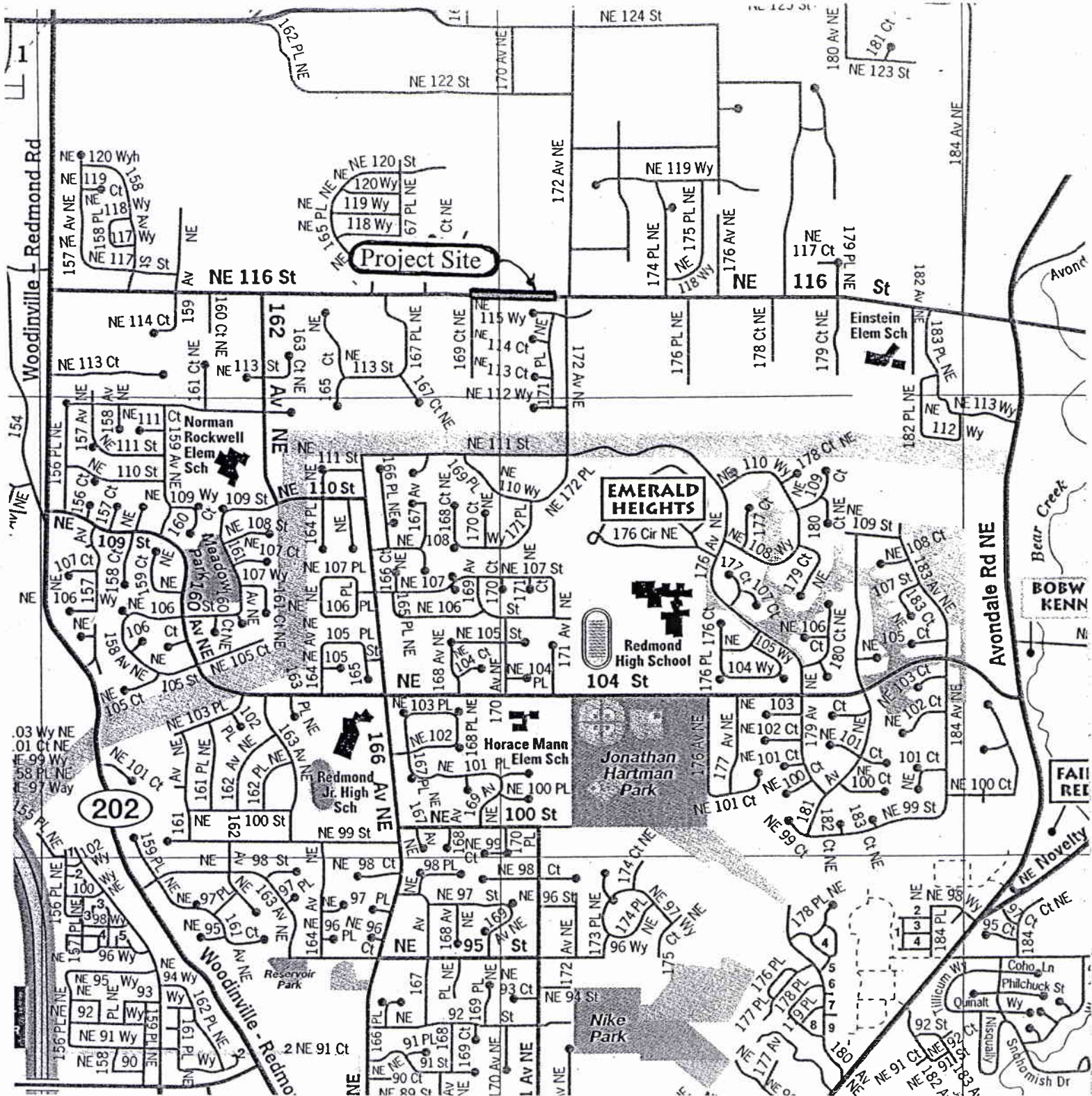
The City and contractor will make appropriate notifications to affected properties and publish notice for three days prior to closure. The actual length of the closure will be dependent on weather conditions and unforeseen challenges in reconstructing the roadway. If this closure is acceptable to Council then no further action is required.

List of Attachments:

- A. Vicinity Map
- B. Detour Route Map
- C. Communications Plan

Attachment A

VICINITY MAP



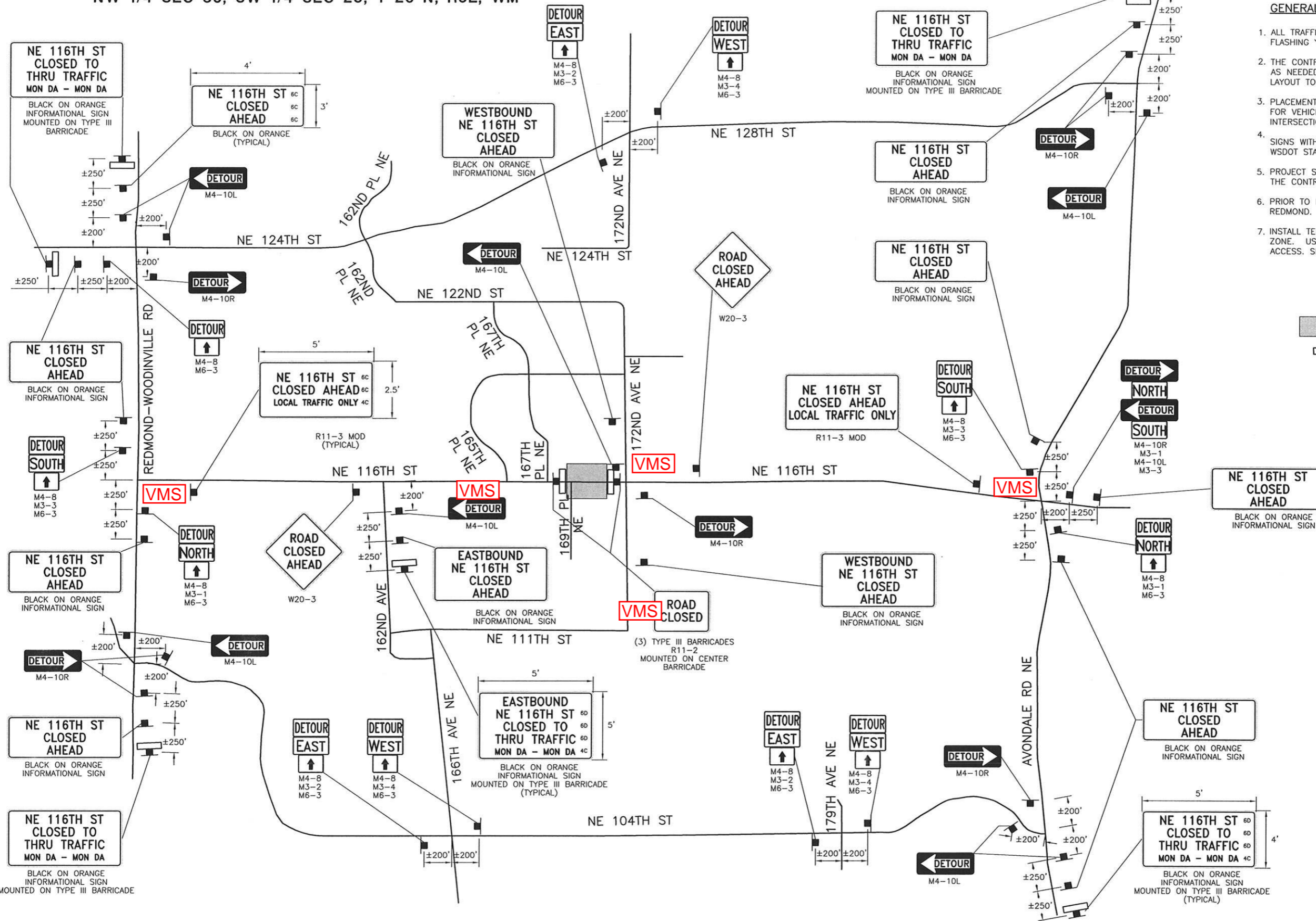
NW 1/4 SEC 36, SW 1/4 SEC 25, T 26 N, R5E, WM

GENERAL NOTES:

1. ALL TRAFFIC CONTROL SIGNS WILL HAVE PORTABLE FLASHING YELLOW WARNING LIGHTS.
2. THE CONTRACTOR SHALL ADJUST CHANNELIZATION DEVICES AS NEEDED TO SUIT TRAFFIC AND VISIBILITY CONDITIONS. LAYOUT TO BE APPROVED BY THE ENGINEER.
3. PLACEMENT OF SIGNS SHALL PROVIDE CLEAR SIGHT LINES FOR VEHICLES ENTERING AND EXITING DRIVEWAYS AND INTERSECTIONS.
4. SIGNS WITHIN WORK AREA SHALL BE IN ACCORDANCE WITH WSDOT STANDARD PLANS AND MUTCD.
5. PROJECT SIGNS SHALL BE FURNISHED AND INSTALLED BY THE CONTRACTOR.
6. PRIOR TO INSTALLING DETOUR COORDINATE WITH CITY OF REDMOND.
7. INSTALL TEMPORARY CONSTRUCTION FENCING ACROSS WORK ZONE. USE 6-FOOT CHAIN LINK FENCE WITH GATES FOR ACCESS. SECURE GATES DURING OFF-HOURS.

LEGEND

- WORK AREA
- TYPE III BARRICADES (2-3 EACH PER CP SHEETS)
- CONSTRUCTION SIGN, CLASS "A"



CALL 48 HOURS BEFORE YOU DIG  
1-800-424-5555

04/28/2010 11:43am I:\25\2009\008 - NE 116th - Redmond\DESIGN\5908-TD1.dwg



MARK	REVISION DESCRIPTION	BY	APP.	DATE

**Reid Middleton**  
728 134th Street SW Suite 200  
Everett, Washington 98204  
Ph: 425 741-3800



DRAWN BY WAC  
DESIGN BY KTW  
CHECK BY MJW  
PROJ MGR MJW

**CITY OF REDMOND**  
**NE 116TH STREET INTERIM IMPROVEMENTS**  
**PROPOSED TRAFFIC DETOUR PLAN**

DRAWING NO. TD1  
PROJECT NO. 25-2009-008  
FED AID NO.    
DATE: APRIL 2010  
SHEET NO. 7 OF 31

---

Temporary Closure of NE 116<sup>th</sup> Street  
Intersection Construction at SR 202 and NE 124<sup>th</sup> Street

As stated in the Staff Report, NE 116<sup>th</sup> Street will be temporarily closed from mid-June through the end of August. Concurrently, the intersection of SR 202 and NE 124<sup>th</sup> Street will be under construction for widening. The intersection construction will take place from approximately mid-June through January 2011.

Due to the disruptions to these two major east-west corridors through Redmond, the following steps will be taken to keep the general public informed.

**Variable Message Signs (VMS)** – a total of five(5) signs will be placed leading to the closure of NE 116<sup>th</sup> Street immediately after the contract is signed (est. June 1) to warn of the impending closure.

These signs will be at:

- NE 116<sup>th</sup> Street and Red-Wood Road
- NE 116<sup>th</sup> Street and Avondale Road
- 172<sup>nd</sup> Avenue NE and NE 111<sup>th</sup> Street
- On NE 116<sup>th</sup> Street at 172<sup>nd</sup> Avenue NE and at 165<sup>th</sup> Place NE

**1650 AM Radio Signs** – a total of five (5) “Tune into 1650 AM” signs will be placed adjacent to the VMS boards.

**Closure information** will be added (and updated as needed) to the:

- City’s website
- City’s Twitter feed
- Redmond Community Radio – 1650 AM
- RCTV Community Message Board

**Construction signage** will be posted on SR 202 and 124<sup>th</sup> Avenue NE to warn travelers of expected traffic delays before construction begins (est. mid-June)