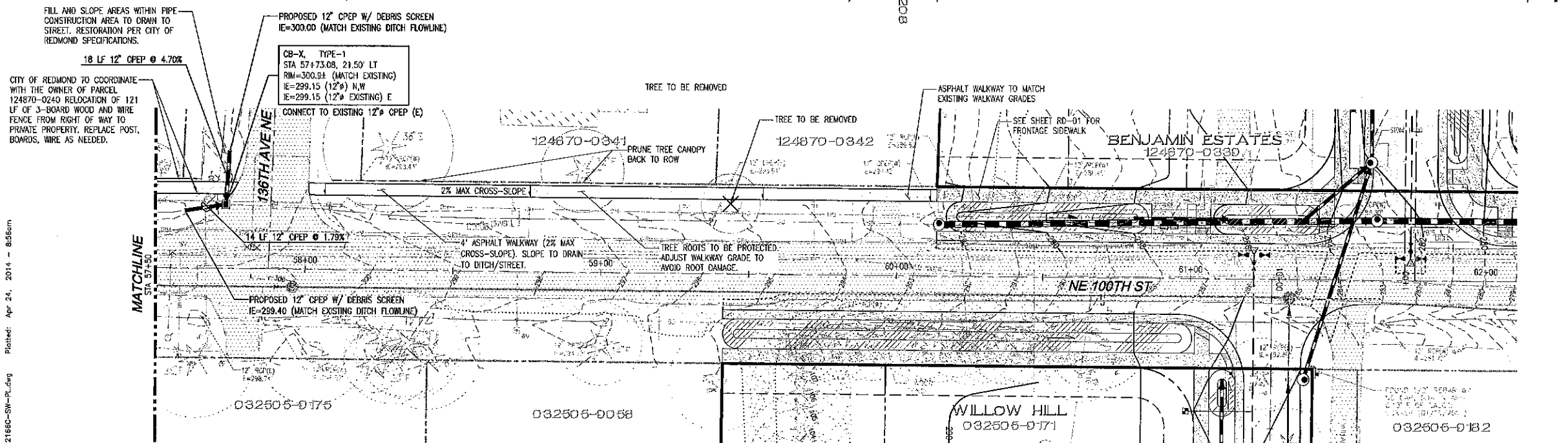
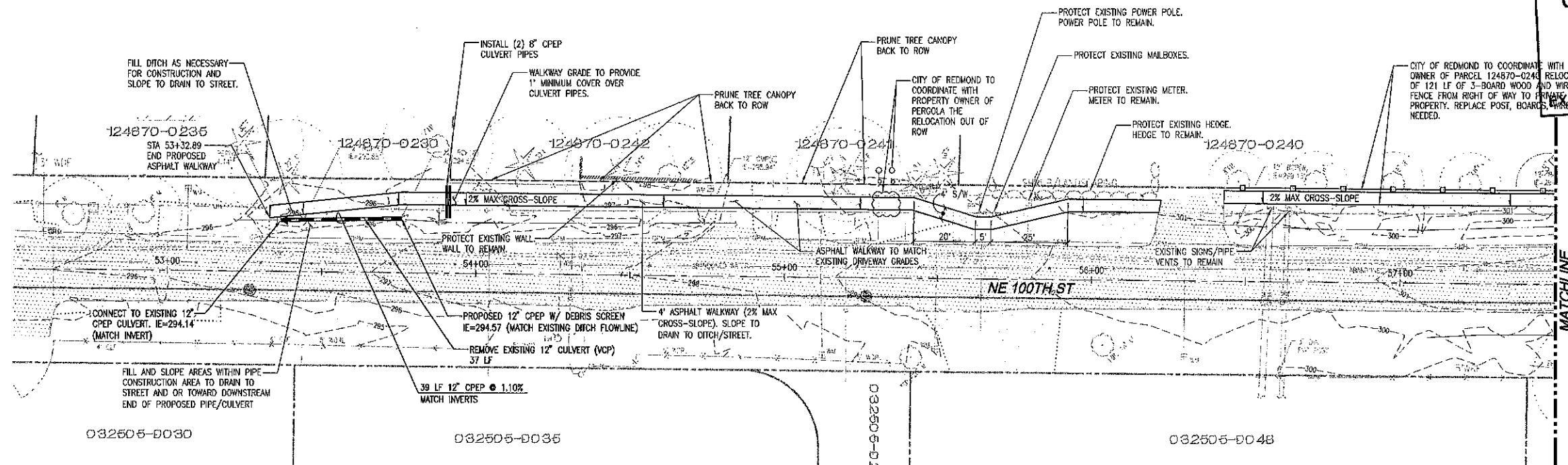
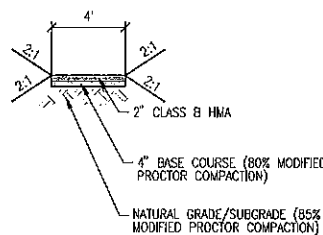


RECEIVED
CITY OF REDMOND
MAY 05 2014
HEARING EXAMINER
FILE # 2013
3
60814



UTILITY LEGEND

- | SYMBOL | DESCRIPTION |
|----------|-----------------------------------|
| [Symbol] | TYPE 1 CATCH BASIN, GRATED LID |
| [Symbol] | TYPE 1 CATCH BASIN, SOLID LID |
| [Symbol] | TYPE 2 CATCH BASIN, GRATED LID |
| [Symbol] | TYPE 2 CATCH BASIN, SOLID LID |
| [Symbol] | STORM PIPE |
| [Symbol] | SEWER MAINHOLE |
| [Symbol] | WATER METER |
| [Symbol] | HYDRANT |
| [Symbol] | SEWER PIPE |
| [Symbol] | WATER PIPE |
| [Symbol] | PROPOSED BIO-SWALE/ROADSIDE DITCH |
| [Symbol] | PROPOSED "NO PARKING" SIGN |
| [Symbol] | PROPOSED WOOD FENCE |



ASPHALT WALKWAY SECTION
NOT TO SCALE

THIS DEVELOPMENT SHALL BE CONSTRUCTED IN ACCORDANCE WITH THE 2012 CITY OF REDMOND STANDARD SPECIFICATIONS AND DETAILS.

APPROVED FOR CONSTRUCTION:

FOR: LINDA E. DE BOLOT, P.E.
DIRECTOR OF PUBLIC WORKS
CITY OF REDMOND

DATE: _____

PLAN CHK ENGR: _____

UTILITY: _____

FIRE: _____

TRANS / ENGR: _____

PLANNING: _____

LAND-2013-00814

NO.	DATE	DESCRIPTION

Engineering
Structural
Survey

LDC
THE CIVIL ENGINEERING GROUP

14001 NE 90TH ST, #1100
WOODVILLE, WA 98072
PH: 425.838.1883
FX: 425.482.2883
www.LDCorp.com

BENJAMIN 13, LLC
BENJAMIN ESTATES
OFFSITE WALKWAY



JOB NUMBER: 12-166
DRAWING NAME: 121660-SW-PL
DESIGNER: MEV
DRAFTING BY: MCH
DATE: 11-13-13
SCALE: AS NOTED
JURISDICTION: REDMOND

RD-06
SHEET 12 OF 20

Drawing: F:\2012\12-166 Benjamin Trust Property\Drawings\Construction\121660-SW-PL.dwg Plotted: Apr 24, 2014 - 8:56am