

## Graduation Rates

City role: Indirect

Entering ninth graders completing high school as a percentage of the total, less those transferring to another district.

### Redmond High School Graduation Rate

Baseline ('09):	96%	Trend: ↔
Observed ('11):	93%	
Objective:	--	

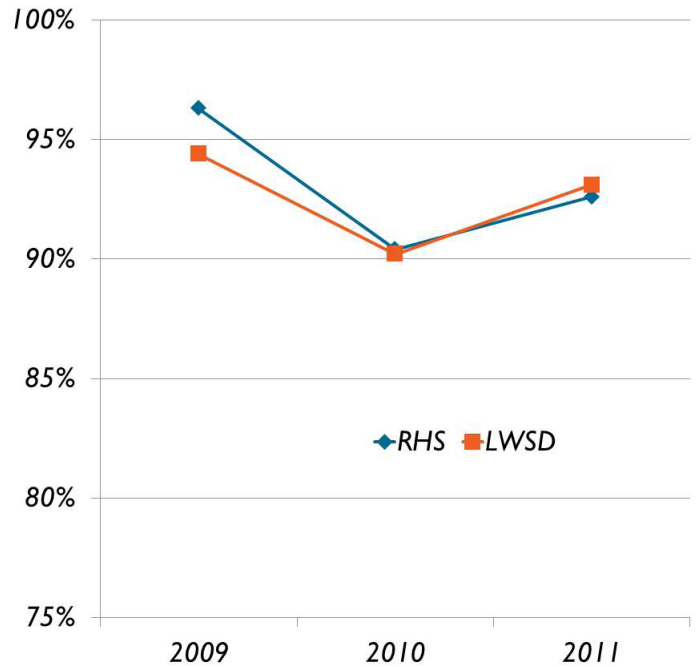
### Lake Washington School District Graduation Rate

Baseline ('09):	94%	Trend: ↔
Observed ('11):	93%	
Objective:	--	

The RHS graduation improved to 93% in 2011. Starting with the class of 2009, the Lake Washington School District revised its method of calculating graduation rates. The City is using the new data series for the first time this year.

Source: Lake Washington School District  
Data updated January 2012

## High School Graduation Rates



## Street Trees

City role: Direct

Number of street trees per arterial centerline mile.

Baseline ('11):	131	Trend: n/a
Observed ('11):	131	
Objective:	--	

Redmond's 60 miles of arterials are planted with 7,802 street trees. The total number of street trees and total number of arterial miles have increased over time. In the future, this measure will give a sense of the character of Redmond's streetscape.