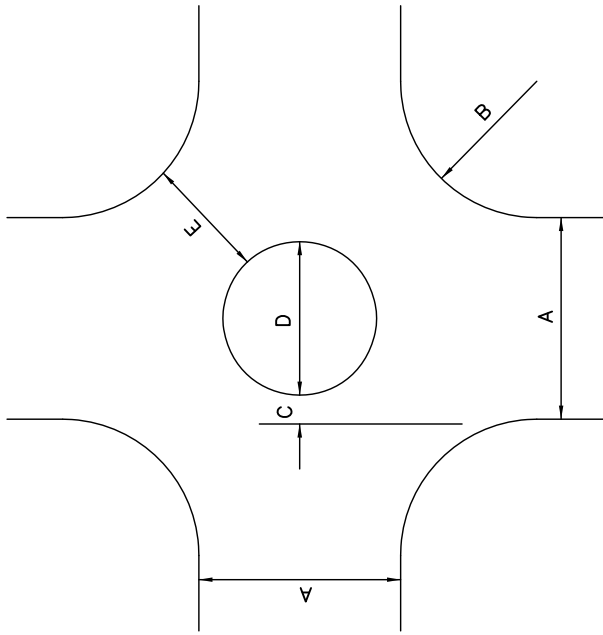


## DIMENSIONS

A STREET WIDTH	B CURB RETURN RADIUS	C OFFSET DISTANCE	D CIRCLE DIAMETER	E OPENING WIDTH
20'	<15'	RECONSTRUCT CURBS	9'	16'+
	15'	5.5'	10'	17'+
	18'	5.0'	11'	18'-
	20'	4.5'	12'	19'+
24'	<12'	RECONSTRUCT CURBS	13'	16'
	12'	5.5'	14'	17'-
	15'	5.0'	15'	18'+
	20'	4.5'	17'	20'-
25'	<12'	RECONSTRUCT CURBS	14'	16'+
	12'	5.5'	15'	17'-
	15'	5.0'	16'	18'-
	18'	4.5'	18'	20'-
30'	10'	5.5'	19'	16'+
	12'	5.0'	20'	17'-
	15'	5.0'	20'	17'+
	18'	4.5'	21'	18'+
32'	20'	4.0'	22'	19'+
	25'	3.0'	24'	20'
	10'	5.5'	21'	16'+
	12'	5.0'	22'	17'-
36'	15'	4.5'	23'	18'-
	18'	4.0'	24'	19'-
	20'	4.0'	24'	19'+
	25'	2.5'	27'	20'
40'	10'	5.0'	26'	17'-
	12'	5.0'	26'	17'+
	15'	4.5'	27'	18'+
	18'	4.0'	28'	19'+
40'	20'	3.5'	29'	20'-
	25'	1.5'	33'	20'
	10'	5.0'	30'	17'+
	12'	4.5'	31'	18'+
40'	15'	4.0'	32'	19'-
	18'	3.5'	33'	20'-
	20'	3.0'	34'	20'
	25'	1.0'	38'	20'

## GEOMETRY



## OPTIMUM CRITERIA

- NOTES:
- USE DIMENSION SCHEDULE AS A DESIGN GUIDE. FINAL DIMENSIONS TO BE DETERMINED BY THE ENGINEER.
  - FOR PLANTER ISLAND SPECIFICATIONS SEE TRAFFIC CIRCLE DETAIL SD478.
- |                           |                         |
|---------------------------|-------------------------|
| OFFSET<br>DISTANCE<br>(C) | OPENING<br>WIDTH<br>(E) |
| 5.5' MAX.                 | 16' MIN.                |
| 5.0'                      | 17' ±                   |
| 4.5'                      | 18' ±                   |
| 4.0'                      | 19' ±                   |
| 3.5' OR LESS              | 20' ±                   |

CITY OF REDMOND, WASHINGTON

APPROVED BY: RON GRANT  
CITY ENGINEER

REVISION DATE: JUNE 01, 2013



STANDARD DETAILS

## TRAFFIC CIRCLE DIMENSIONS

FILE NAME: SD477.DWG

DETAIL NUMBER: 99-477